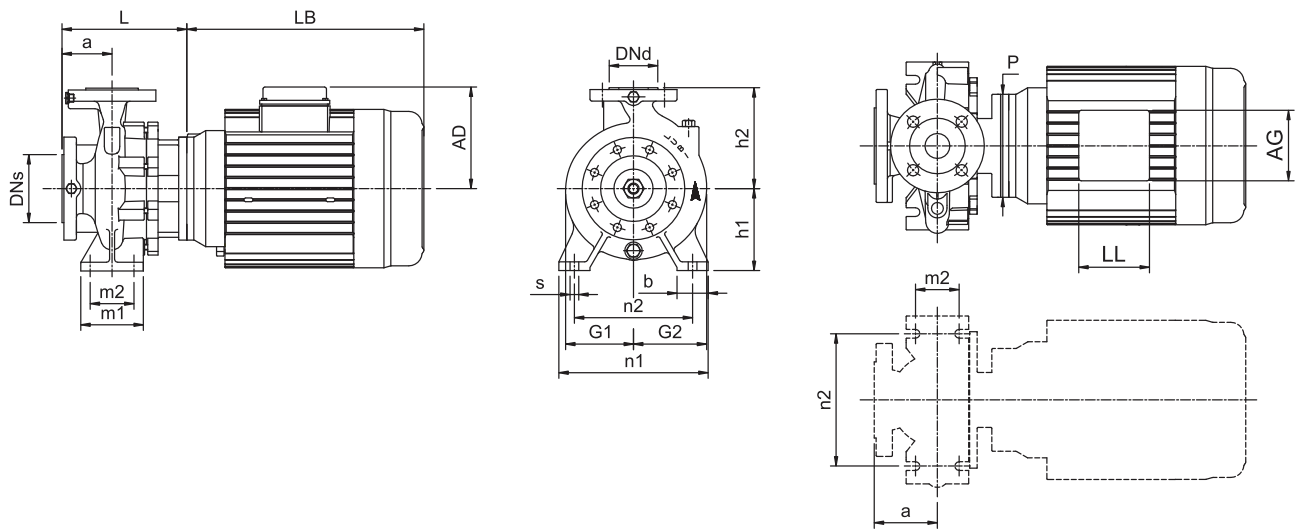


Technical Data

LES 80-2006

Single-stage end-suction pumps

6-pole



Power	[kw]	0.75	1.1	1.5
	[hp]	1	1.5	2
Frame		90L	90L	112M
PN	[bar]	16	16	16
Code for Impeller diameter		C	B	A
DNs	[mm]	100	100	100
Dnd	[mm]	80	80	80
a	[mm]	125	125	125
h2	[mm]	250	250	250
L	[mm]	295	295	242
h1	[mm]	180	180	180
G1	[mm]	155	155	155
G2	[mm]	186	186	186
m1	[mm]	125	125	125
m2	[mm]	95	95	95
n1	[mm]	345	345	345
n2	[mm]	280	280	280
b	[mm]	65	65	65
s	[mm]	14	14	14
H	[mm]	-	-	-
LB	[mm]	272	272	356
AD	[mm]	125	125	150
AG	[mm]	101	101	112
LL	[mm]	86	86	112
P	[mm]	200	200	165
C	[mm]	-	-	-
B	[mm]	-	-	-
A	[mm]	-	-	-
K	[mm]	-	-	-
Net Weight	[kg]	65	66	78
Gross Weight	[kg]	75	76	88
Volume	[m ³]	0.195	0.195	0.225

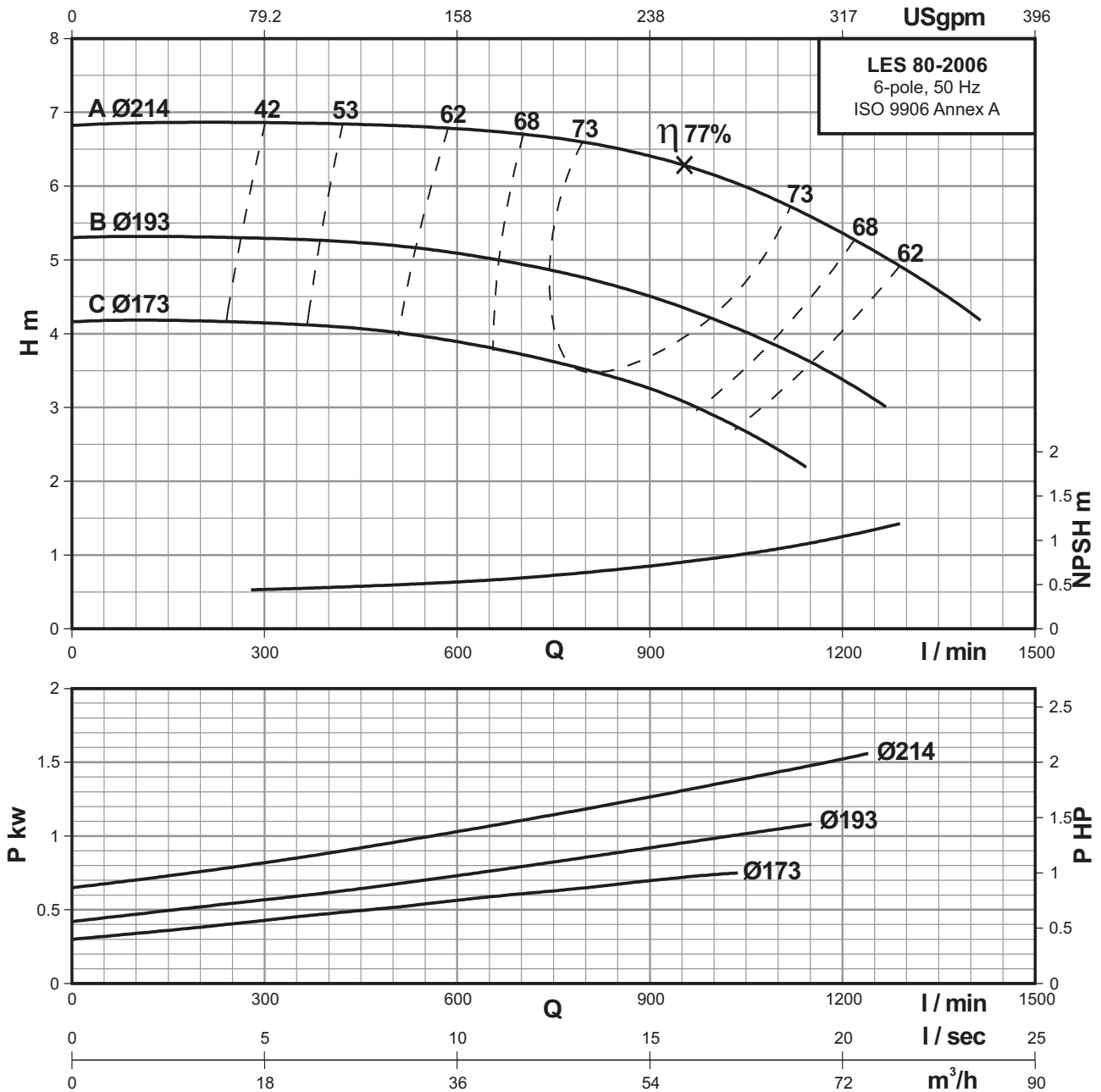
6 POLE

Performance curves

LES 80-2006

Single-stage end-suction pumps

6-pole



Performance Data At n=960 RPM

MODEL	POWER		m³/h	18	24	30	36	42	48	54	60	66	72	78	84
	KW	HP		l/min	300	400	500	600	700	800	900	1000	1100	1200	1300
LES 80-2006C	0.75	1.0	H (m)	4.2	4.1	4	3.9	3.7	3.5	3.3	2.9	2.4	-	-	-
LES 80-2006B	1.1	1.5		5.3	5.3	5.2	5.1	4.9	4.7	4.5	4.2	3.8	3.4	-	-
LES 80-2006A	1.5	2.0		6.9	6.8	6.8	6.7	6.7	6.6	6.4	6.2	5.8	5.4	4.9	4.3

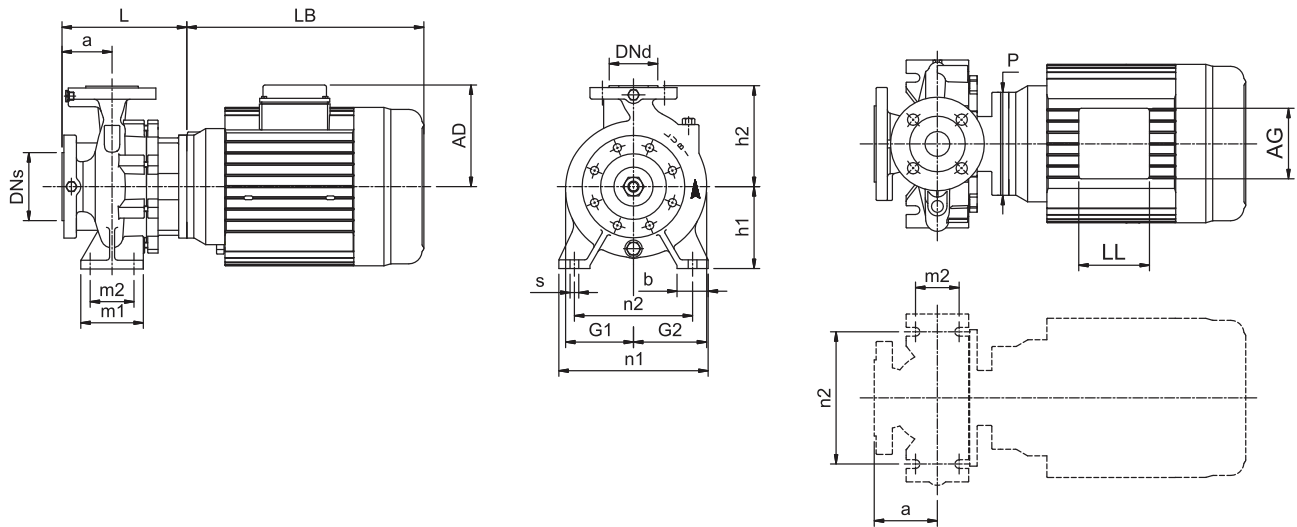
6 POLE

Technical Data

LES 80-2506

Single-stage end-suction pumps

6-pole



Power	[kw]	1.5	2.2	3
	[hp]	2	3	4
Frame		112M	112M	132M
PN	[bar]	16	16	16
Code for Impeller diameter		C	B	A
DN1	[mm]	100	100	100
DNd	[mm]	80	80	80
a	[mm]	125	125	125
h2	[mm]	280	280	280
L	[mm]	236	236	242
h1	[mm]	200	200	200
G1	[mm]	178	178	178
G2	[mm]	204	204	204
m1	[mm]	160	160	160
m2	[mm]	120	120	120
n1	[mm]	400	400	400
n2	[mm]	315	315	315
b	[mm]	80	80	80
s	[mm]	18	18	18
H	[mm]	-	-	-
LB	[mm]	356	356	417
AD	[mm]	150	150	178
AG	[mm]	112	112	112
LL	[mm]	112	112	112
P	[mm]	165	165	225
C	[mm]	-	-	-
B	[mm]	-	-	-
A	[mm]	-	-	-
K	[mm]	-	-	-
Net Weight	[kg]	91	95	121
Gross Weight	[kg]	101	105	131
Volume	[m ³]	0.225	0.225	0.251

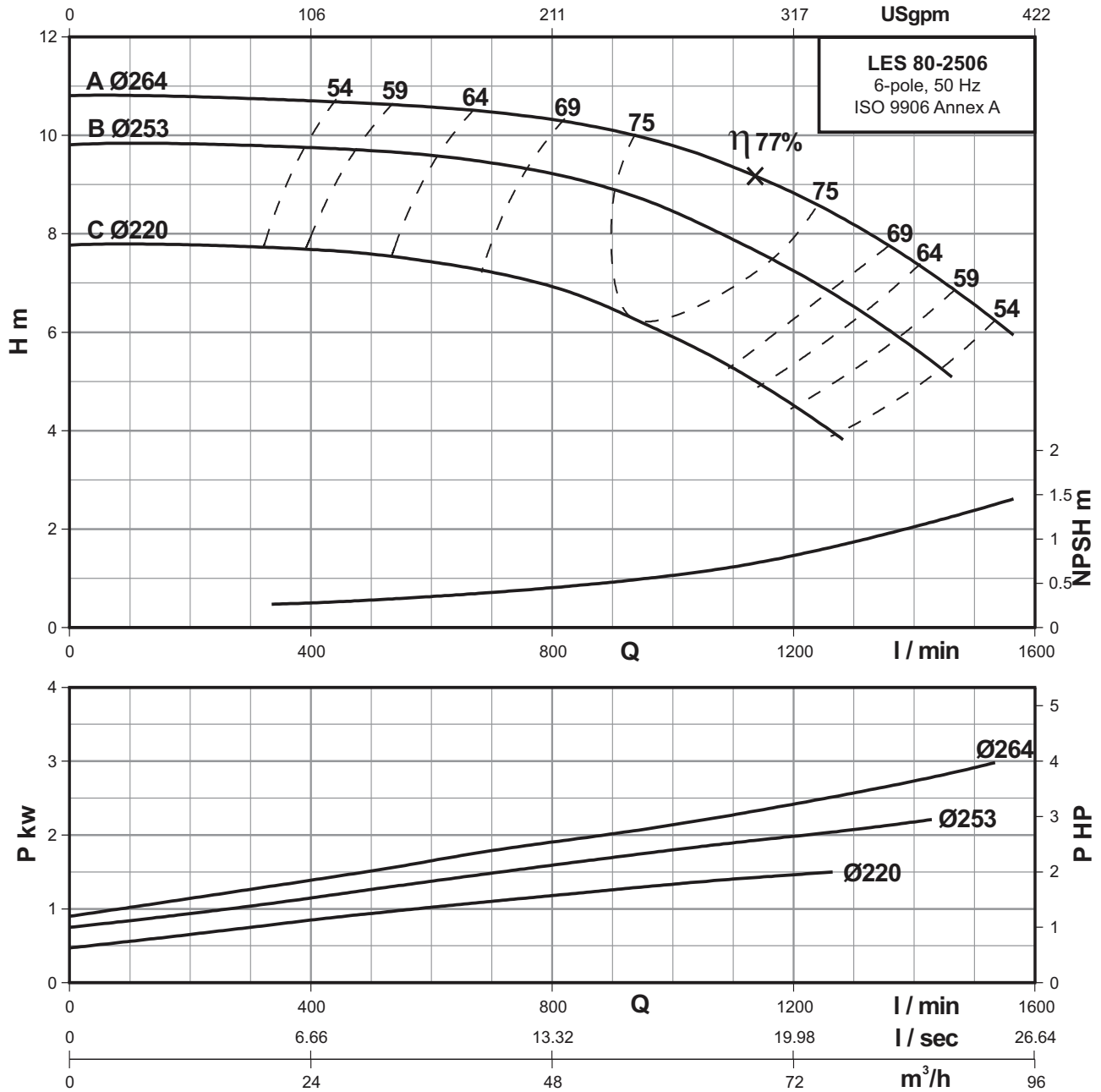
6 POLE

Performance curves

LES 80-2506

Single-stage end-suction pumps

6-pole



Performance Data At n=960 RPM

MODEL	POWER		m³/h	24	30	36	42	48	54	60	66	72	78	84	90
	KW	HP		l/min	400	500	600	700	800	900	1000	1100	1200	1300	1400
LES 80-2506C	1.5	2.0	H (m)	7.7	7.6	7.4	7.2	6.9	6.4	5.9	5.3	4.5	3.7	-	-
LES 80-2506B	2.2	3.0		9.8	9.7	9.6	9.4	9.3	8.9	8.4	7.9	7.3	6.5	5.6	-
LES 80-2506A	3.0	4.0		10.7	10.6	10.5	10.4	10.3	10.1	9.8	9.3	8.8	8.2	7.4	6.5

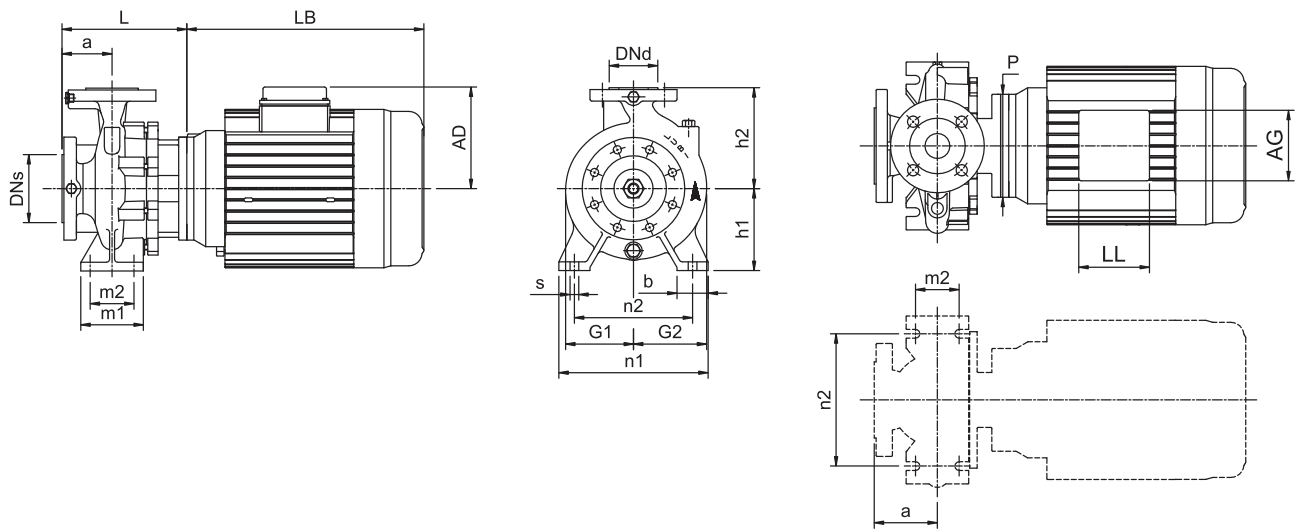
6 POLE

Technical Data

LES 65-250L6

Single-stage end-suction pumps

6-pole



Power	[kw]	1.1	1.5	2.2
	[hp]	1.5	2	3
Frame		90L	112M	112M
PN	[bar]	16	16	16
Code for Impeller diameter		C	B	A
DN1	[mm]	100	100	100
DNd	[mm]	65	65	65
a	[mm]	100	100	100
h2	[mm]	250	250	250
L	[mm]	270	211	211
h1	[mm]	200	200	200
G1	[mm]	173	173	173
G2	[mm]	196	196	196
m1	[mm]	160	160	160
m2	[mm]	120	120	120
n1	[mm]	360	360	360
n2	[mm]	280	280	280
b	[mm]	80	80	80
s	[mm]	18	18	18
H	[mm]	-	-	-
LB	[mm]	272	356	356
AD	[mm]	125	150	150
AG	[mm]	101	112	112
LL	[mm]	86	112	112
P	[mm]	200	165	165
C	[mm]	-	-	-
B	[mm]	-	-	-
A	[mm]	-	-	-
K	[mm]	-	-	-
Net Weight	[kg]	71	86	90
Gross Weight	[kg]	81	96	100
Volume	[m ³]	0.195	0.225	0.225

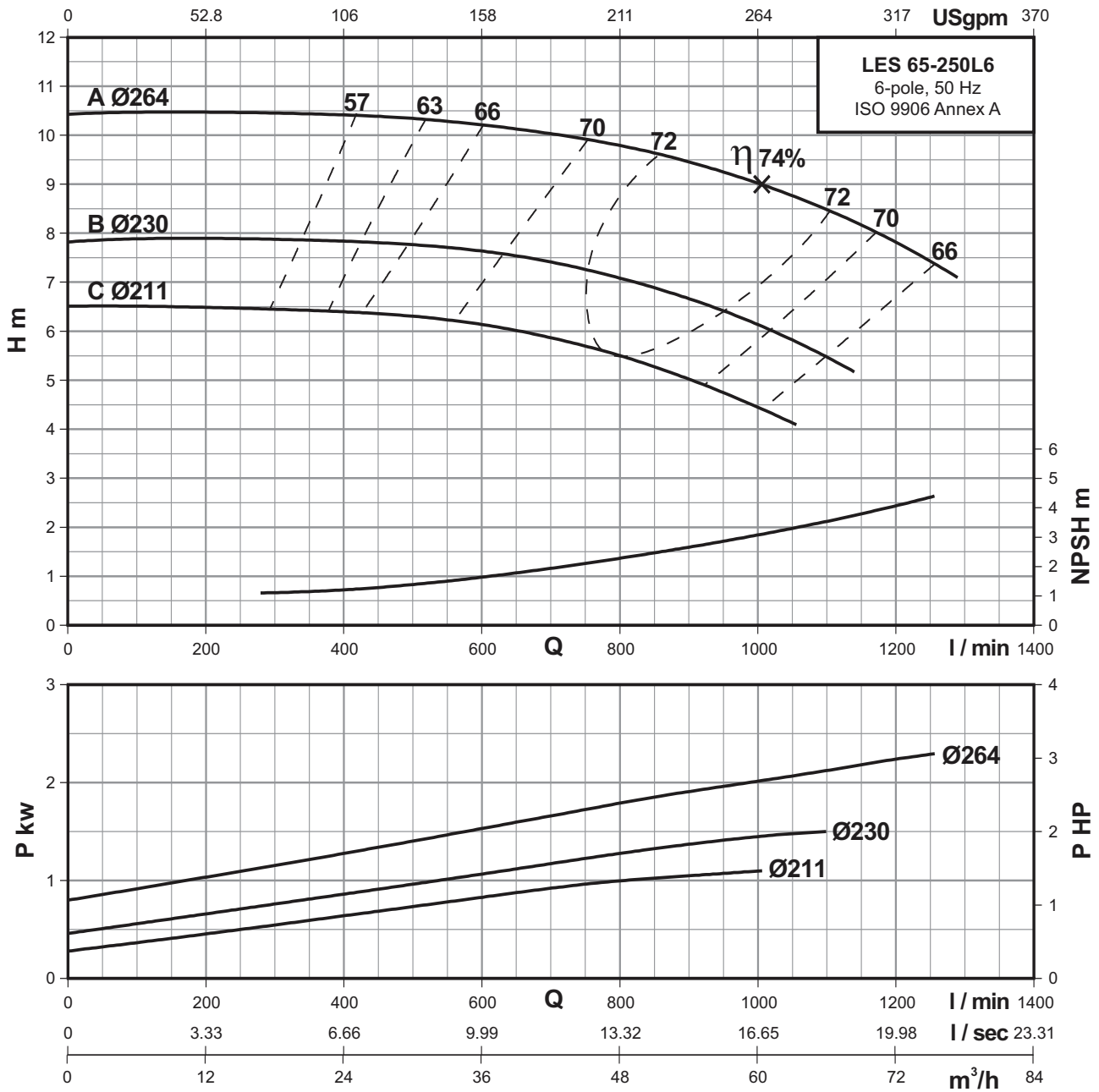
6 POLE

Performance curves

LES 65-250L6

Single-stage end-suction pumps

6-pole



Performance Data At n=960 RPM

MODEL	POWER		m ³ /h l/min	12	18	24	30	36	42	48	54	60	66	72	78
	KW	HP		200	300	400	500	600	700	800	900	1000	1100	1200	1300
LES 65-250L6C	1.1	1.5	H (m)	6.5	6.5	6.4	6.3	6.1	5.8	5.5	5	4.5	-	-	-
LES 65-250L6B	1.5	2.0		7.9	7.8	7.7	7.7	7.6	7.4	7.1	6.6	6.2	5.5	-	-
LES 65-250L6A	2.2	3.0		10.6	10.5	10.4	10.3	10.2	10	9.8	9.5	9	8.5	7.8	6.9

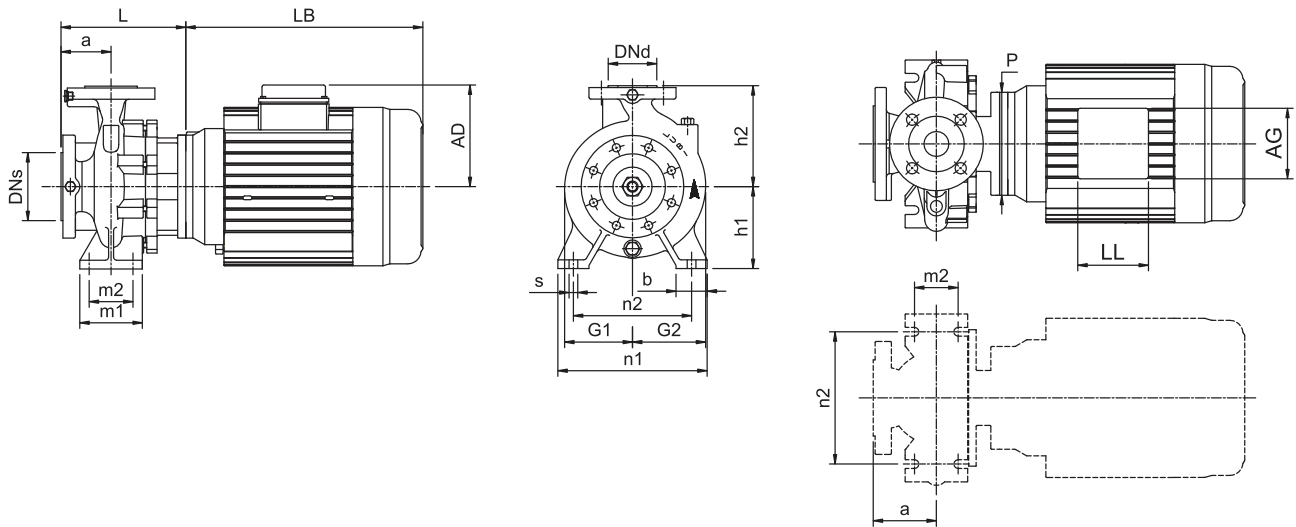
6 POLE

Technical Data

LES 80-3156

Single-stage end-suction pumps

6-pole



Power	[kw]	2.2	3	4
	[hp]	3	4	5.5
Frame		112M	132M	132M
PN	[bar]	16	16	16
Code for Impeller diameter		C	B	A
DN1	[mm]	100	100	100
DNd	[mm]	80	80	80
a	[mm]	125	125	125
h2	[mm]	315	315	315
L	[mm]	246	251	251
h1	[mm]	250	250	250
G1	[mm]	204	204	204
G2	[mm]	227	227	227
m1	[mm]	160	160	160
m2	[mm]	120	120	120
n1	[mm]	400	400	400
n2	[mm]	315	315	315
b	[mm]	80	80	80
s	[mm]	18	18	18
H	[mm]	-	-	-
LB	[mm]	356	417	417
AD	[mm]	150	178	178
AG	[mm]	112	112	112
LL	[mm]	112	112	112
P	[mm]	165	225	225
C	[mm]	-	-	-
B	[mm]	-	-	-
A	[mm]	-	-	-
K	[mm]	-	-	-
Net Weight	[kg]	104	133	135
Gross Weight	[kg]	174	203	205
Volume	[m ³]	0.528	0.528	0.528

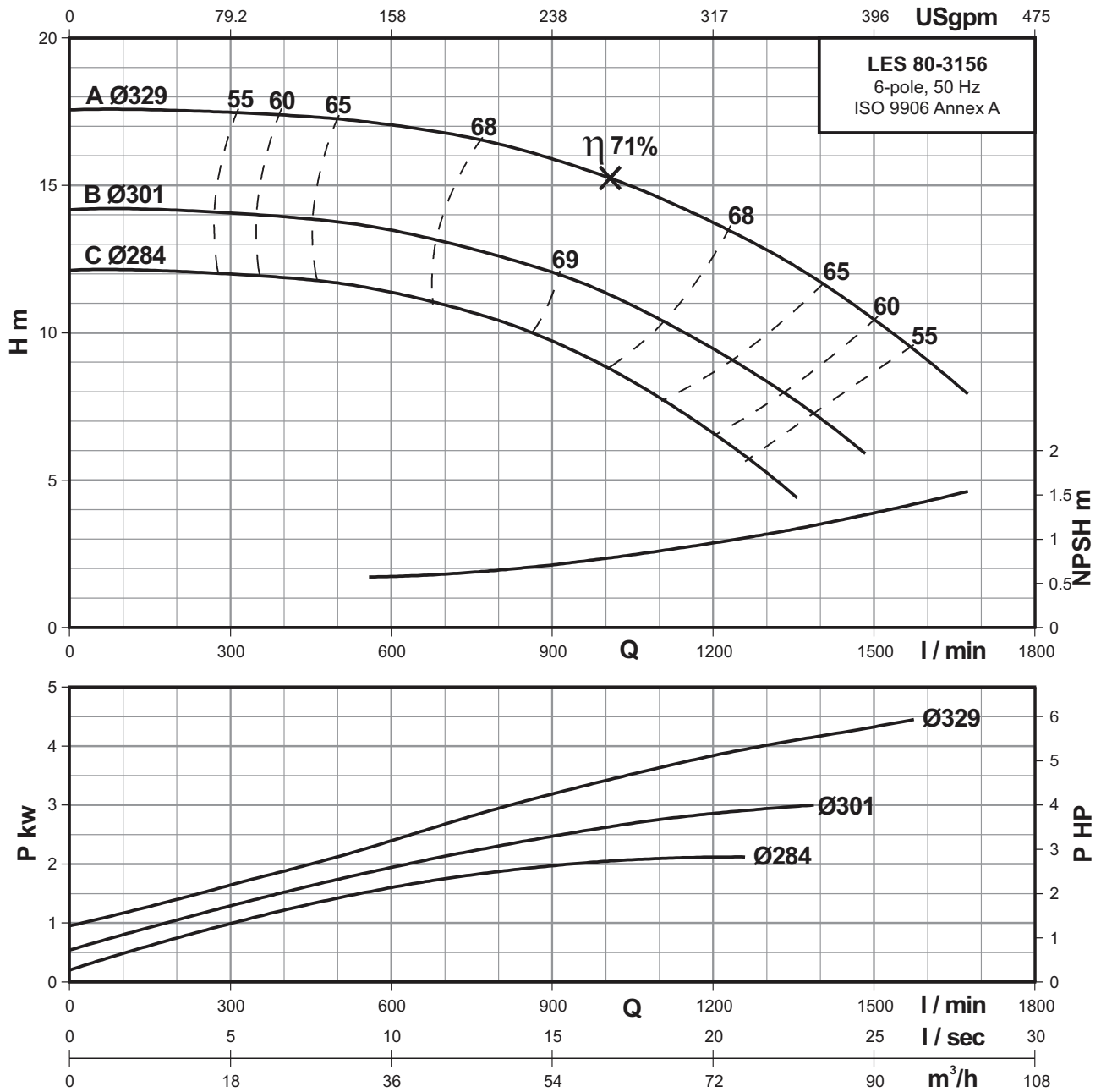
6 POLE

Performance curves

LES 80-3156

Single-stage end-suction pumps

6-pole



Performance Data At n=960 RPM

MODEL	POWER		m³/h	30	36	42	48	54	60	66	72	78	84	90	96
	KW	HP		l/min	500	600	700	800	900	1000	1100	1200	1300	1400	1500
LES 80-3156C	2.2	3.0	H (m)	11.7	11.4	11	10.3	9.8	8.9	7.8	6.5	5.2	-	-	-
LES 80-3156B	3.0	4.0		13.8	13.5	13	12.6	12	11.3	10.4	9.5	8.3	7	5.6	-
LES 80-3156A	4.0	5.5		17.3	17	16.8	16.4	15.9	15.3	14.6	13.8	12.8	11.7	10.3	9

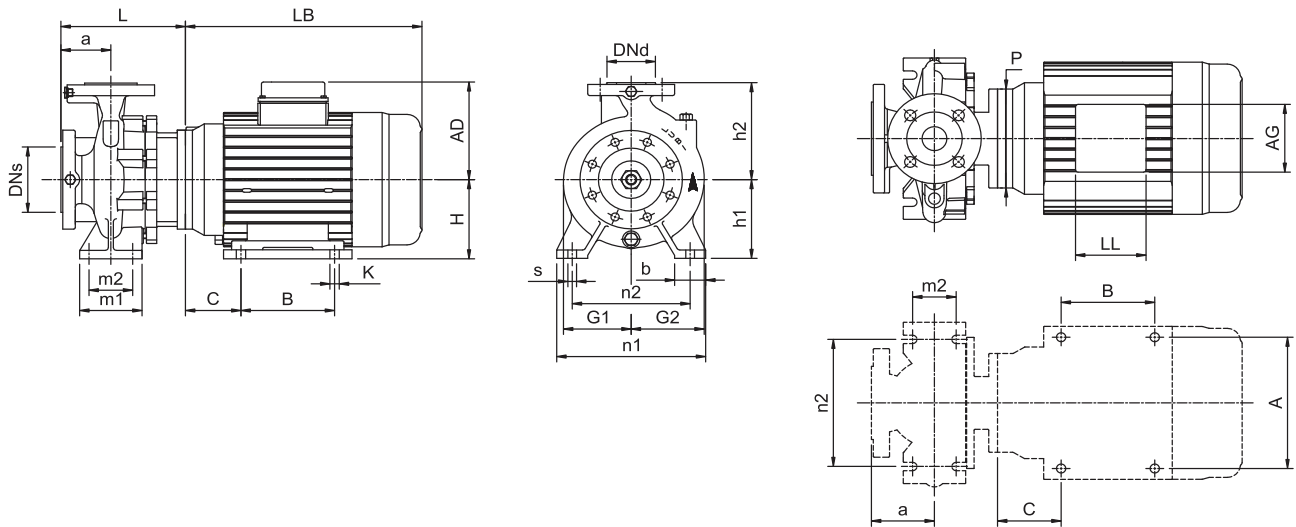
6 POLE

Technical Data

Single-stage end-suction pumps

LES 80-4006

6-pole



Power	[kw]	5.5	7.5	9.3
	[hp]	7.5	10	12.5
Frame		132M	160M	160M
PN	[bar]	16	16	16
Code for Impeller diameter		C	B	A
DNs	[mm]	100	100	100
Dnd	[mm]	80	80	80
a	[mm]	140	140	140
h2	[mm]	355	355	355
L	[mm]	280	287	287
h1	[mm]	280	280	280
G1	[mm]	254	254	254
G2	[mm]	276	276	276
m1	[mm]	160	160	160
m2	[mm]	120	120	120
n1	[mm]	435	435	435
n2	[mm]	355	355	355
b	[mm]	80	80	80
s	[mm]	18	18	18
H	[mm]	-	160	160
LB	[mm]	417	500	500
AD	[mm]	178	222	222
AG	[mm]	112	152	152
LL	[mm]	112	152	152
P	[mm]	225	254	254
C	[mm]	-	108	108
B	[mm]	-	210	210
A	[mm]	-	254	254
K	[mm]	-	15	15
Net Weight	[kg]	166	174	180
Gross Weight	[kg]	242	250	256
Volume	[m ³]	0.604	0.604	0.604

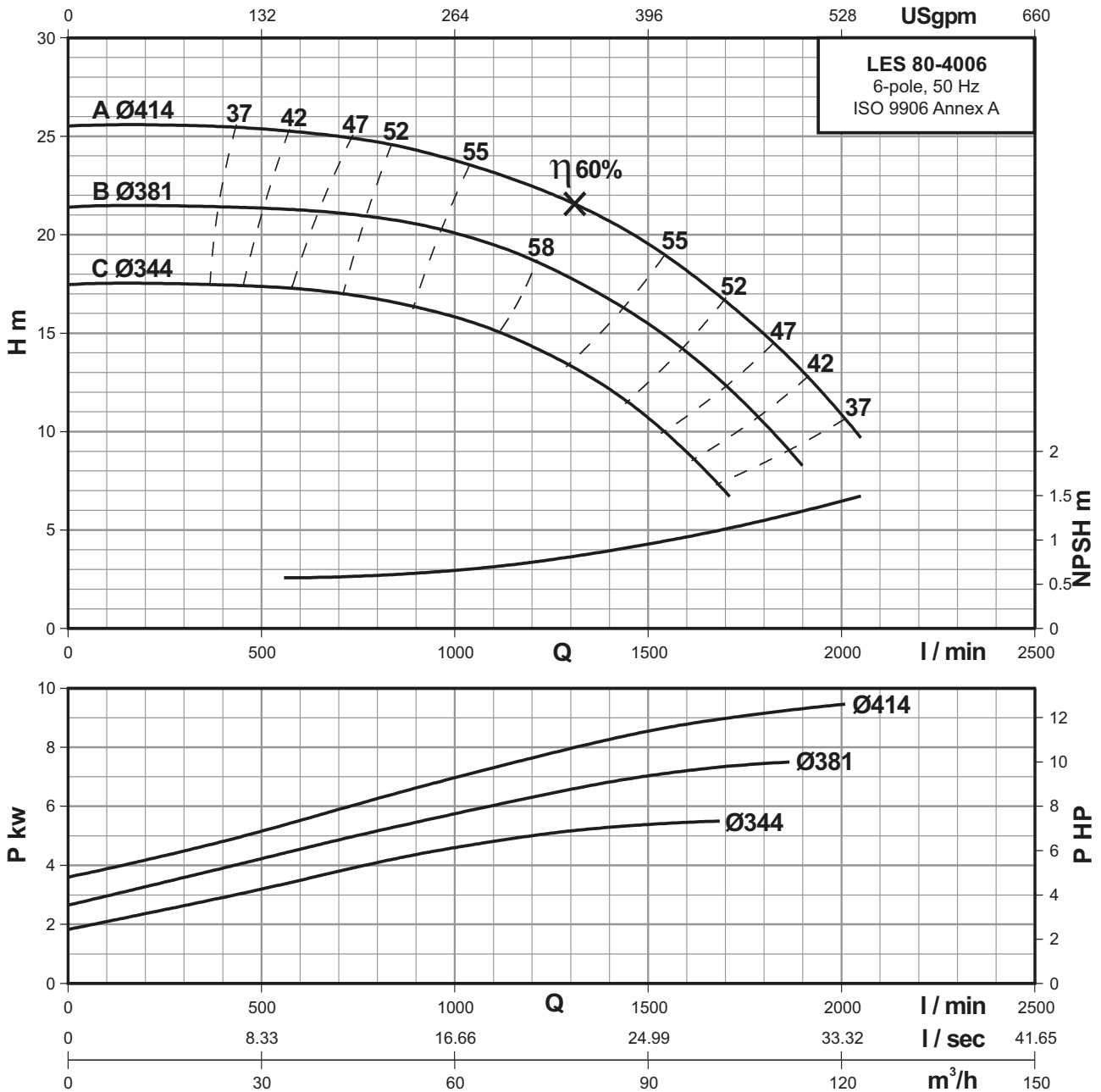
6 POLE

Performance curves

LES 80-4006

Single-stage end-suction pumps

6-pole



Performance Data At n=960 RPM

MODEL	POWER		m³/h	12	24	36	48	60	72	84	96	108	120
	KW	HP		l/min	200	400	600	800	1000	1200	1400	1600	1800
LES 80-4006C	5.5	7.5	H (m)	17.5	17.4	17.2	16.8	15.9	14.3	12	9	-	-
LES 80-4006B	7.5	10.0		21.5	21.4	21.2	20.9	20	18.8	16.8	14	10.4	-
LES 80-4006A	9.3	12.5		25.5	25.4	25.2	24.7	23.8	22.4	20.6	18	15	10.9

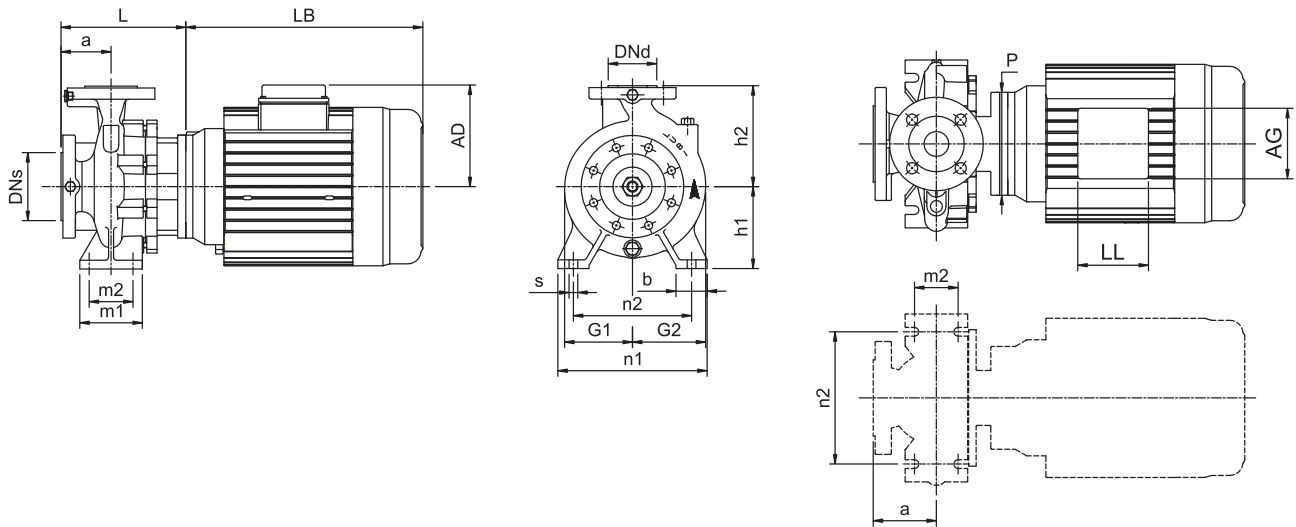
6 POLE

Technical Data

LES 100-2006

Single-stage end-suction pumps

6-pole



Power	[kw]	0.75	1.1	1.5	2.2
	[hp]	1	1.5	2	3
Frame		90L	90L	112M	112M
PN	[bar]	16	16	16	16
Code for Impeller diameter		D	C	B	A
DN _s	[mm]	125	125	125	125
DN _d	[mm]	100	100	100	100
a	[mm]	125	125	125	125
h ₂	[mm]	280	280	280	280
L	[mm]	295	295	242	242
h ₁	[mm]	200	200	200	200
G ₁	[mm]	166	166	166	166
G ₂	[mm]	202	202	202	202
m ₁	[mm]	160	160	160	160
m ₂	[mm]	120	120	120	120
n ₁	[mm]	360	360	360	360
n ₂	[mm]	280	280	280	280
b	[mm]	80	80	80	80
s	[mm]	18	18	18	18
H	[mm]	-	-	-	-
LB	[mm]	272	272	356	356
AD	[mm]	125	125	150	150
AG	[mm]	101	101	112	112
LL	[mm]	86	86	112	112
P	[mm]	200	200	165	165
C	[mm]	-	-	-	-
B	[mm]	-	-	-	-
A	[mm]	-	-	-	-
K	[mm]	-	-	-	-
Net Weight	[kg]	75	76	89	93
Gross Weight	[kg]	85	86	99	103
Volume	[m ³]	0.195	0.195	0.225	0.225

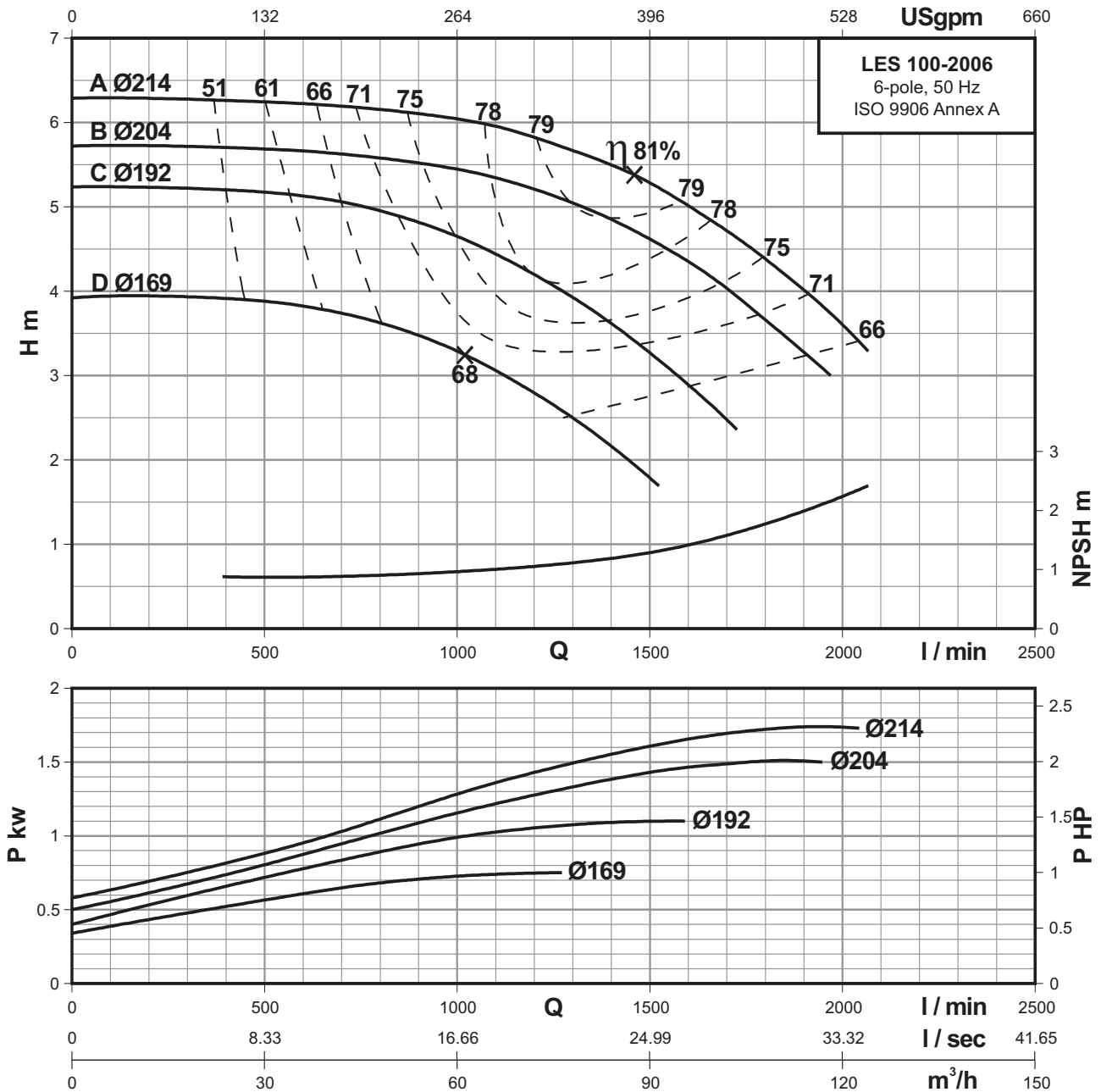
6 POLE

Performance curves

LES 100-2006

Single-stage end-suction pumps

6-pole



Performance Data At n=960 RPM

MODEL	POWER		m³/h	12	24	36	48	60	72	84	96	108	120
	KW	HP		l/min	200	400	600	800	1000	1200	1400	1600	1800
LES 100-2006D	0.75	1.0	H (m)	3.9	3.9	3.8	3.6	3.3	2.8	2.2	-	-	-
LES 100-2006C	1.1	1.5		5.2	5.2	5.1	4.9	4.6	4.2	3.6	2.9	-	-
LES 100-2006B	1.5	2.0		5.7	5.7	5.6	5.6	5.4	5.2	4.8	4.3	3.6	2.9
LES 100-2006A	2.2	3.0		6.3	6.2	6.2	6.1	6	5.8	5.5	5	4.4	3.6

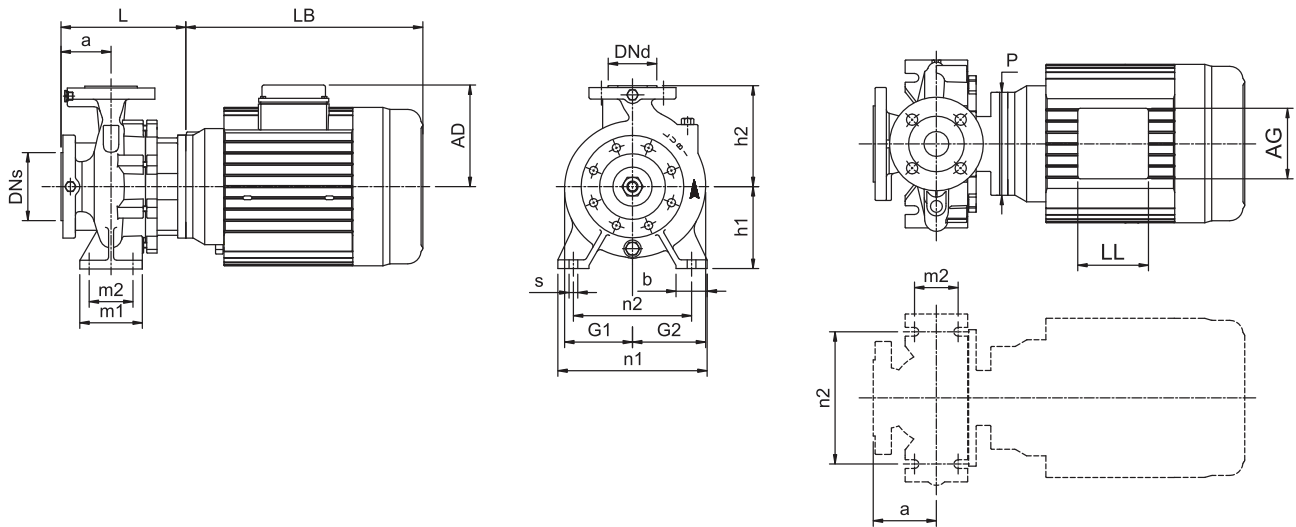
6 POLE

Technical Data

LES 100-2506

Single-stage end-suction pumps

6-pole



Power	[kw]	1.5	2.2	3
	[hp]	2	3	4
Frame		112M	112M	132M
PN	[bar]	16	16	16
Code for Impeller diameter		C	B	A
DN1	[mm]	125	125	125
DNd	[mm]	100	100	100
a	[mm]	140	140	140
h2	[mm]	280	280	280
L	[mm]	251	251	257
h1	[mm]	225	225	225
G1	[mm]	184	184	184
G2	[mm]	214	214	214
m1	[mm]	160	160	160
m2	[mm]	120	120	120
n1	[mm]	400	400	400
n2	[mm]	315	315	315
b	[mm]	80	80	80
s	[mm]	18	18	18
H	[mm]	-	-	-
LB	[mm]	356	356	417
AD	[mm]	150	150	178
AG	[mm]	112	112	112
LL	[mm]	112	112	112
P	[mm]	165	165	225
C	[mm]	-	-	-
B	[mm]	-	-	-
A	[mm]	-	-	-
K	[mm]	-	-	-
Net Weight	[kg]	101	105	131
Gross Weight	[kg]	111	115	141
Volume	[m ³]	0.225	0.225	0.251

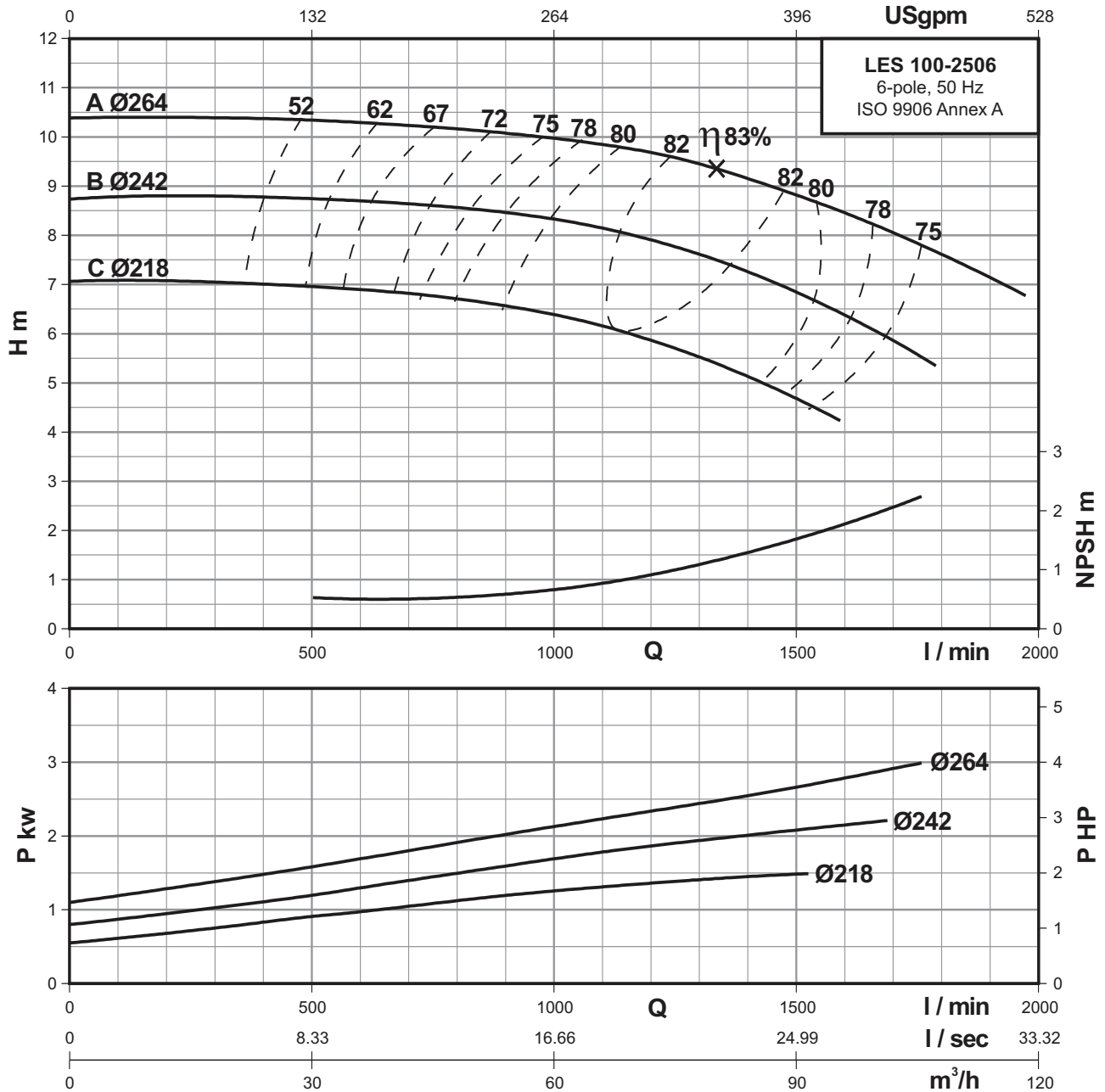
6 POLE

Performance curves

LES 100-2506

Single-stage end-suction pumps

6-pole



Performance Data At n=960 RPM

MODEL	POWER		m³/h	36	48	60	66	72	78	84	90	96	102	108	114
	KW	HP		l/min	600	800	1000	1100	1200	1300	1400	1500	1600	1700	1800
LES 100-2506C	1.5	2.0	H (m)	6.9	6.7	6.4	6.2	5.8	5.5	5.1	4.6	4.2	-	-	-
LES 100-2506B	2.2	3.0		8.7	8.6	8.4	8.2	7.9	7.6	7.3	6.8	6.4	5.8	5.3	-
LES 100-2506A	3.0	4.0		10.3	10.2	10	9.8	9.7	9.5	9.2	8.8	8.5	8	7.6	7.1

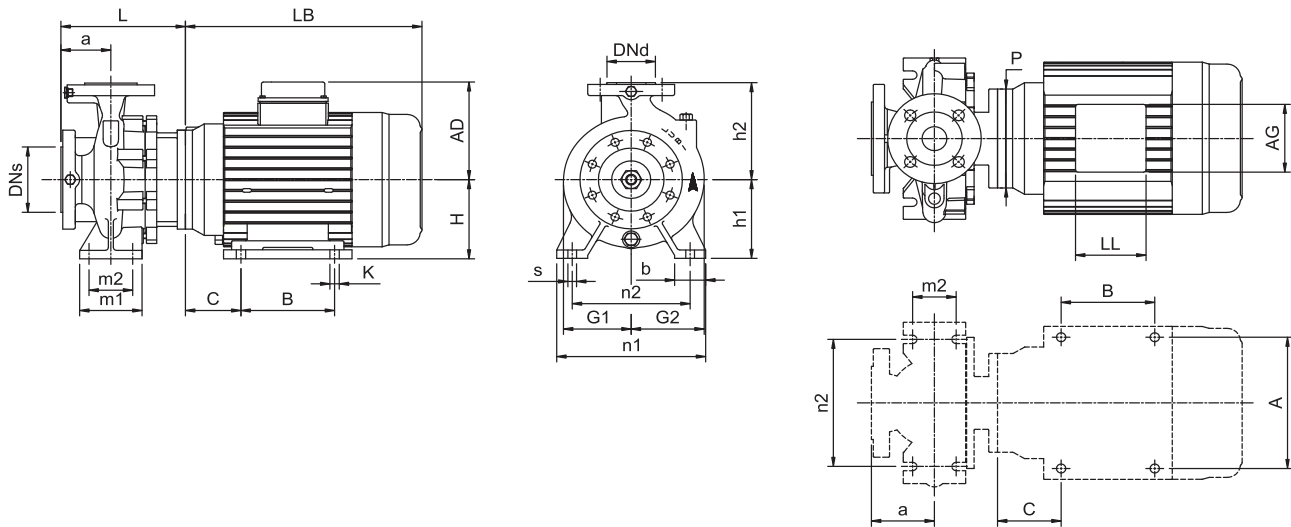
6 POLE

Technical Data

Single-stage end-suction pumps

LES 100-3156

6-pole



Power	[kw]	4	5.5	7.5
	[hp]	5.5	7.5	10
Frame		132M	132M	160M
PN	[bar]	16	16	16
Code for Impeller diameter		C	B	A
DN _s	[mm]	125	125	125
DN _d	[mm]	100	100	100
a	[mm]	140	140	140
h ₂	[mm]	315	315	315
L	[mm]	266	266	278
h ₁	[mm]	250	250	250
G ₁	[mm]	213	213	213
G ₂	[mm]	245	245	245
m ₁	[mm]	160	160	160
m ₂	[mm]	120	120	120
n ₁	[mm]	400	400	400
n ₂	[mm]	315	315	315
b	[mm]	80	80	80
s	[mm]	18	18	18
H	[mm]	-	-	160
LB	[mm]	417	417	500
AD	[mm]	178	178	222
AG	[mm]	112	112	152
LL	[mm]	112	112	152
P	[mm]	225	225	254
C	[mm]	-	-	108
B	[mm]	-	-	210
A	[mm]	-	-	254
K	[mm]	-	-	15
Net Weight	[kg]	145	156	164
Gross Weight	[kg]	210	221	234
Volume	[m ³]	0.468	0.468	0.528

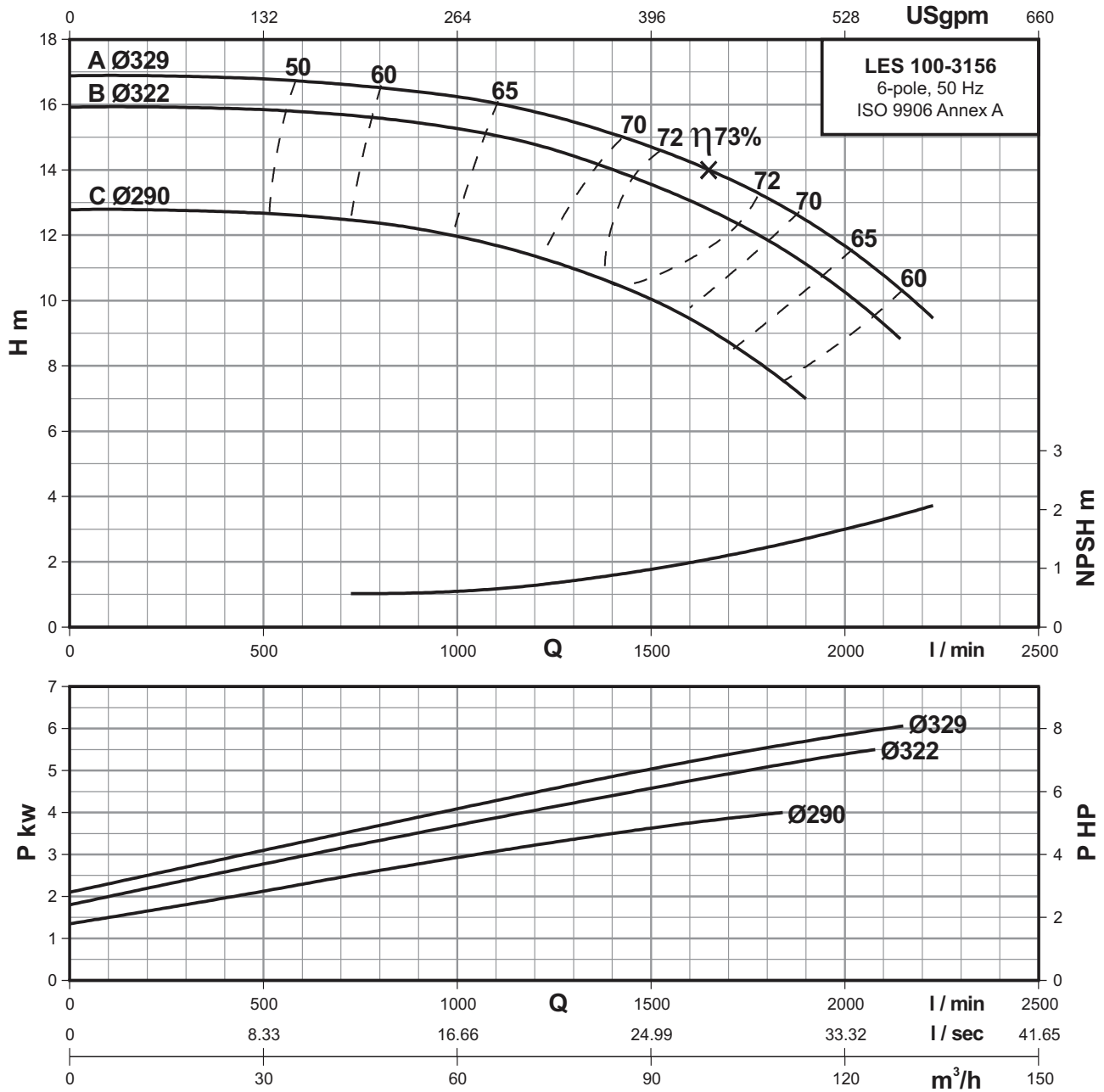
6 POLE

Performance curves

LES 100-3156

Single-stage end-suction pumps

6-pole



Performance Data At n=960 RPM

MODEL	POWER		m³/h l/min	12	24	36	48	60	72	84	96	108	120	132
	KW	HP		200	400	600	800	1000	1200	1400	1600	1800	2000	2200
LES 100-3156C	4.0	5.5	H (m)	12.8	12.7	12.6	12.4	12	11.4	10.5	9.5	7.9	-	-
LES 100-3156B	5.5	7.5		16	15.9	15.8	15.6	15.3	14.8	14	13	11.9	10.2	-
LES 100-3156A	7.5	10.0		16.9	16.8	16.7	16.5	16.2	15.8	15.1	14.3	13.2	11.7	9.7

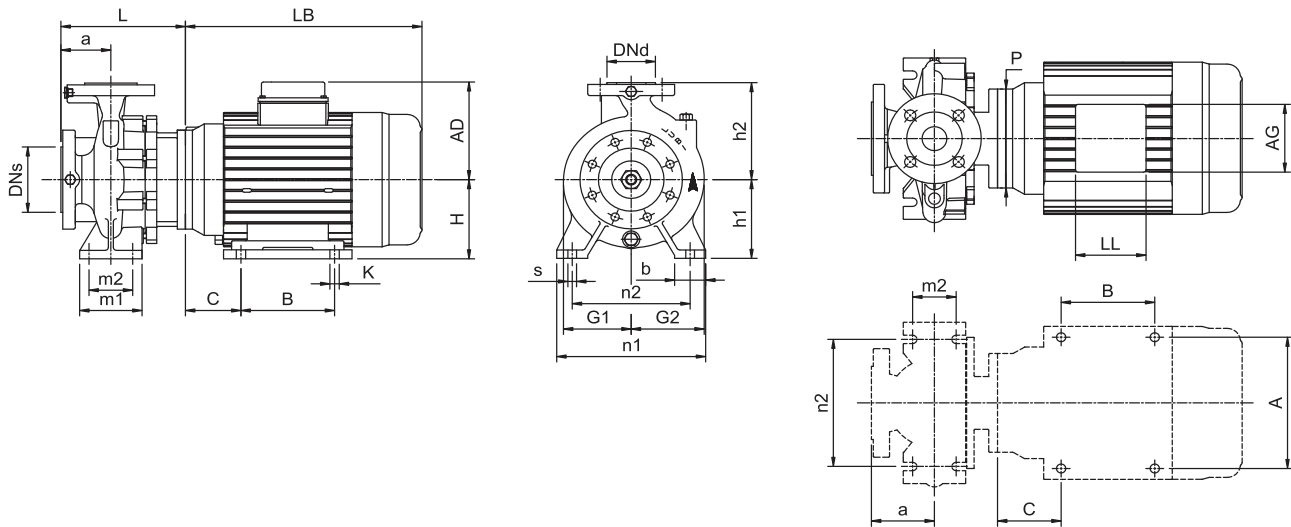
6 POLE

Technical Data

Single-stage end-suction pumps

LES 100-4006

6-pole



Power	[kw]	7.5	9.3	11	15
	[hp]	10	12.5	15	20
Frame		160M	160M	160L	180L
PN	[bar]	16	16	16	16
Code for Impeller diameter		D	C	B	A
DN1	[mm]	125	125	125	125
DNd	[mm]	100	100	100	100
a	[mm]	140	140	140	140
h2	[mm]	355	355	355	355
L	[mm]	287	287	287	287
h1	[mm]	280	280	280	280
G1	[mm]	254	254	254	254
G2	[mm]	279	279	279	279
m1	[mm]	200	200	200	200
m2	[mm]	150	150	150	150
n1	[mm]	500	500	500	500
n2	[mm]	400	400	400	400
b	[mm]	100	100	100	100
s	[mm]	22	22	22	22
H	[mm]	160	160	160	180
LB	[mm]	500	500	544	641
AD	[mm]	222	222	222	294
AG	[mm]	152	152	152	263
LL	[mm]	152	152	152	195
P	[mm]	254	254	254	356
C	[mm]	108	108	108	121
B	[mm]	210	210	254	279
A	[mm]	254	254	254	279
K	[mm]	15	15	15	15
Net Weight	[kg]	191	196	201	343
Gross Weight	[kg]	267	272	277	424
Volume	[m ³]	0.604	0.604	0.604	0.681

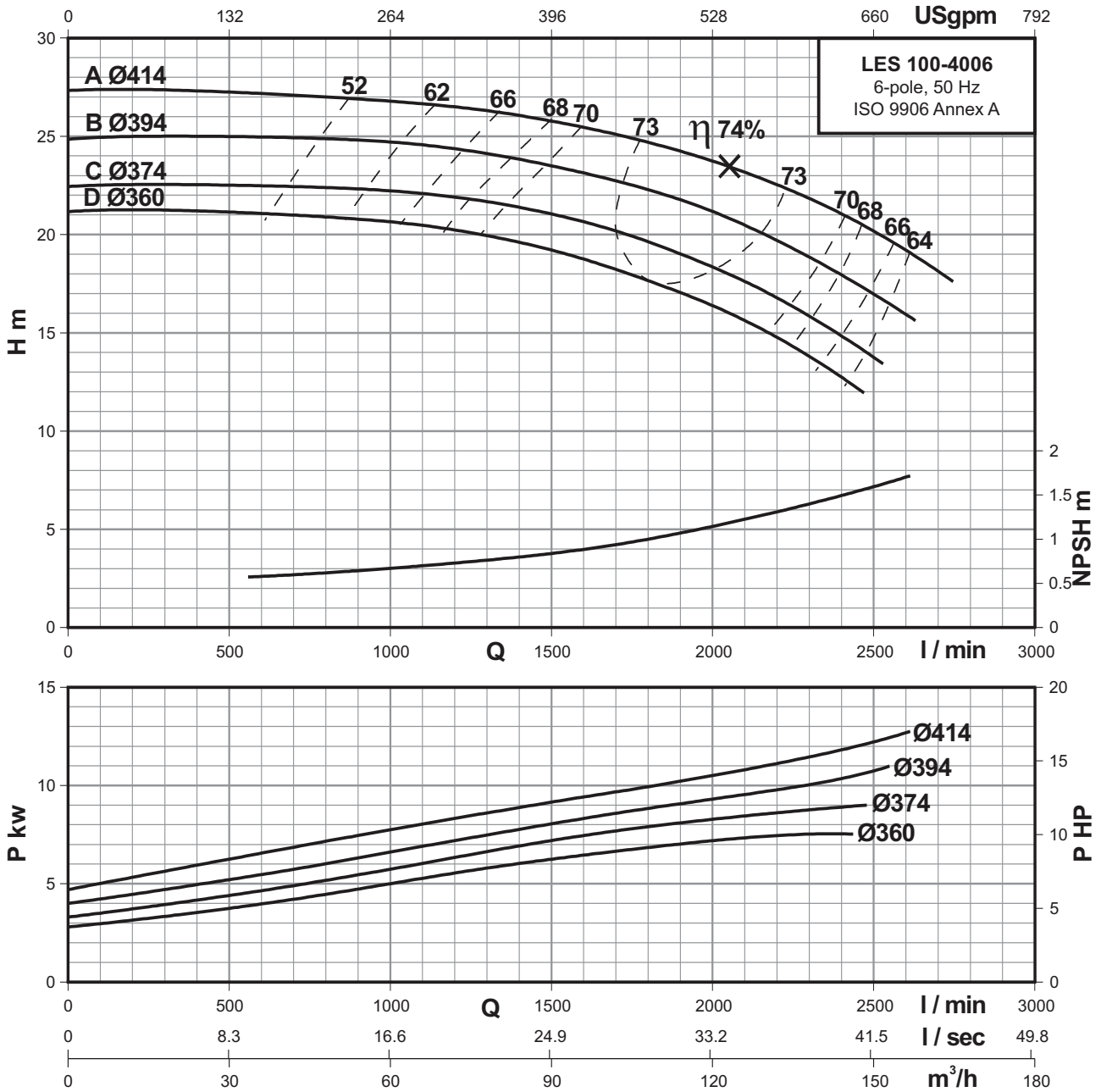
6 POLE

Performance curves

LES 100-4006

Single-stage end-suction pumps

6-pole



Performance Data At n=960 RPM

MODEL	POWER		m ³ /h	30	42	54	66	78	90	102	114	126	138	150	162
	KW	HP		l/min	500	700	900	1100	1300	1500	1700	1900	2100	2300	2500
LES 100-4006D	7.5	10.0	H (m)	21.1	21	20.8	20.4	20	19.2	18.2	17	15.6	13.8	11.7	-
LES 100-4006C	9.3	12.5		22.5	22.4	22.3	22	21.7	21	20.2	19	17.6	15.8	13.8	-
LES 100-4006B	11.0	15.0		25	24.9	24.8	24.5	24.1	23.5	22.8	21.8	20.4	18.9	17	-
LES 100-4006A	15.0	20.0		27.2	27	26.9	26.6	26.2	25.8	25	24.2	23.2	21.8	20.1	18

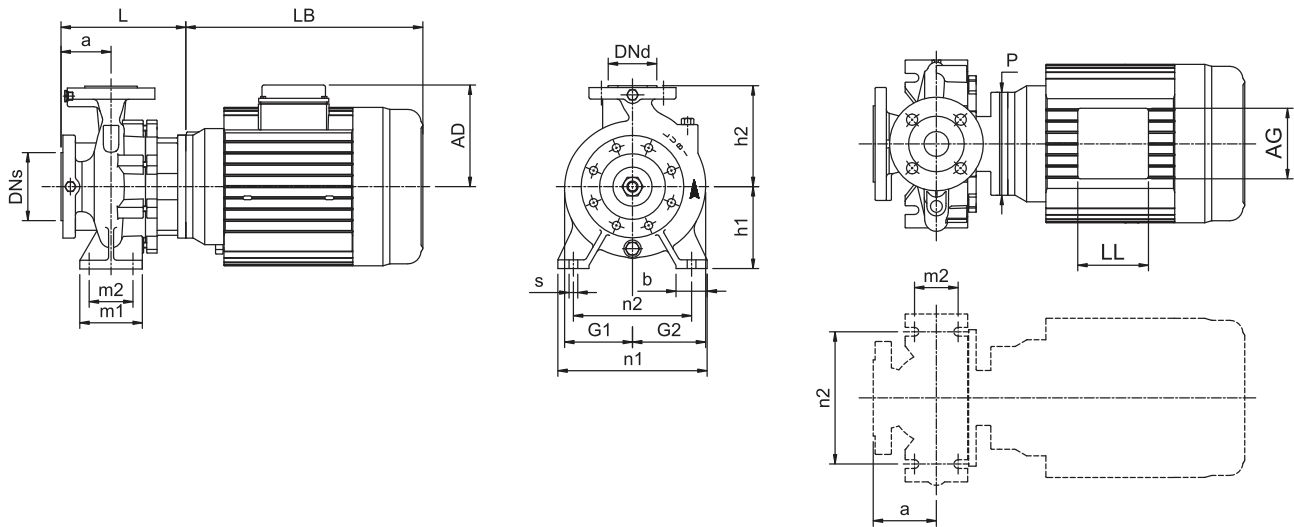
6 POLE

Technical Data

Single-stage end-suction pumps

LES 125-2506

6-pole



Power	[kw]	2.2	3	4	5.5
	[hp]	3	4	5.5	7.5
Frame		112M	132M	132M	132M
PN	[bar]	16	16	16	16
Code for Impeller diameter		D	C	B	A
DN1	[mm]	150	150	150	150
DNd	[mm]	125	125	125	125
a	[mm]	140	140	140	140
h2	[mm]	355	355	355	355
L	[mm]	251	257	257	257
h1	[mm]	250	250	250	250
G1	[mm]	206	206	206	206
G2	[mm]	250	250	250	250
m1	[mm]	160	160	160	160
m2	[mm]	120	120	120	120
n1	[mm]	400	400	400	400
n2	[mm]	315	315	315	315
b	[mm]	80	80	80	80
s	[mm]	18	18	18	18
H	[mm]	-	-	-	-
LB	[mm]	356	417	417	417
AD	[mm]	150	178	178	178
AG	[mm]	112	112	112	112
LL	[mm]	112	112	112	112
P	[mm]	165	225	225	225
C	[mm]	-	-	-	-
B	[mm]	-	-	-	-
A	[mm]	-	-	-	-
K	[mm]	-	-	-	-
Net Weight	[kg]	131	158	160	170
Gross Weight	[kg]	196	223	225	235
Volume	[m ³]	0.468	0.468	0.468	0.468

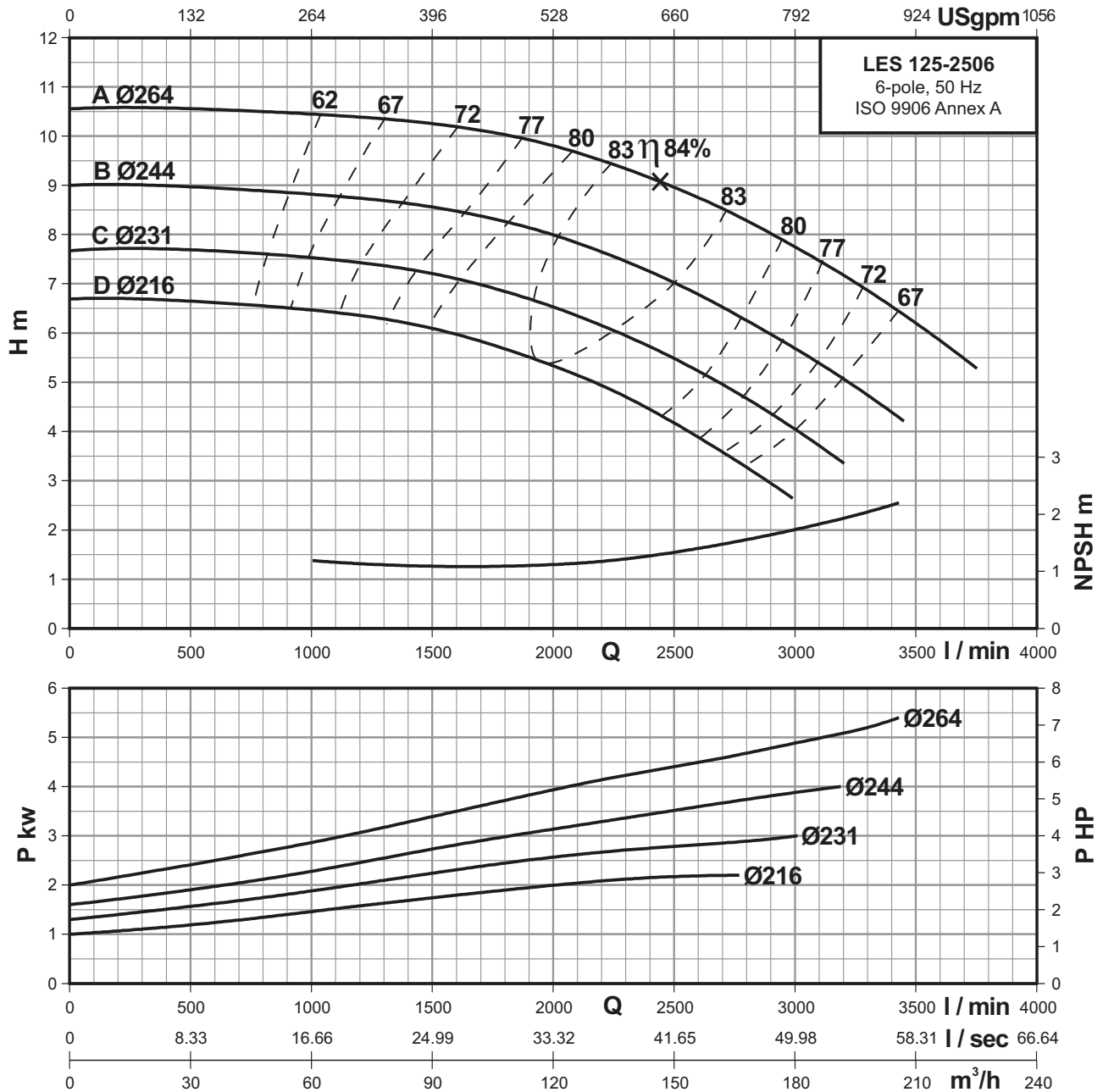
6 POLE

Performance curves

LES 125-2506

Single-stage end-suction pumps

6-pole



Performance Data At n=960 RPM

MODEL	POWER		m ³ /h	84	96	108	120	132	144	156	168	180	190	204	216	222
	KW	HP		l/min	1400	1600	1800	2000	2200	2400	2600	2800	3000	3200	3400	3600
LES 125-2506D	2.2	3.0	H (m)	6.2	6	5.7	5.3	4.9	4.4	3.9	3.3	2.6	-	-	-	-
LES 125-2506C	3.0	4.0		7.3	7.1	6.8	6.5	6.2	5.7	5.2	4.7	4	3.4	-	-	-
LES 125-2506B	4.0	5.5		8.6	8.5	8.3	8	7.6	7.2	6.8	6.2	5.7	5.1	4.4	-	-
LES 125-2506A	5.5	7.5		10.3	10.2	10	9.8	9.5	9.2	8.8	8.3	7.7	7.2	6.6	5.8	5.5

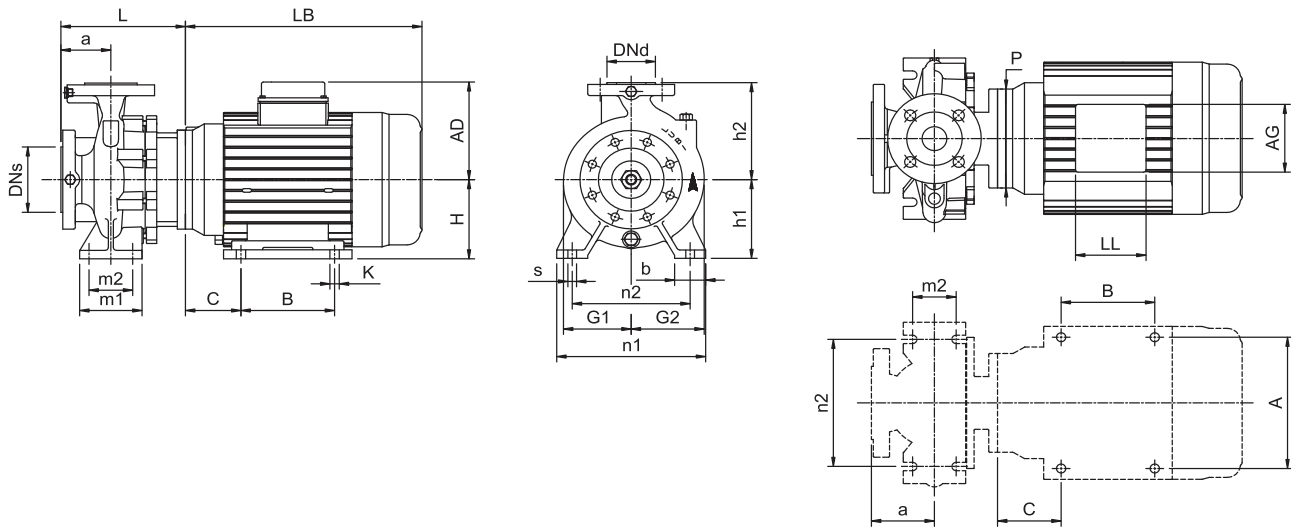
6 POLE

Technical Data

Single-stage end-suction pumps

LES 125-3156

6-pole



Power	[kw]	4	5.5	7.5	9.3
	[hp]	5.5	7.5	10	12.5
Frame		132M	132M	160M	160M
PN	[bar]	16	16	16	16
Code for Impeller diameter		D	C	B	A
DN _s	[mm]	150	150	150	150
DN _d	[mm]	125	125	125	125
a	[mm]	140	140	140	140
h ₂	[mm]	355	355	355	355
L	[mm]	276	276	288	288
h ₁	[mm]	280	280	280	280
G ₁	[mm]	227	227	227	227
G ₂	[mm]	262	262	262	262
m ₁	[mm]	200	200	200	200
m ₂	[mm]	150	150	150	150
n ₁	[mm]	500	500	500	500
n ₂	[mm]	400	400	400	400
b	[mm]	100	100	100	100
s	[mm]	22	22	22	22
H	[mm]	-	-	160	160
LB	[mm]	417	417	500	500
AD	[mm]	178	178	222	222
AG	[mm]	112	112	152	152
LL	[mm]	112	112	152	152
P	[mm]	225	225	254	254
C	[mm]	-	-	108	108
B	[mm]	-	-	210	210
A	[mm]	-	-	254	254
K	[mm]	-	-	15	15
Net Weight	[kg]	171	181	189	195
Gross Weight	[kg]	247	257	265	271
Volume	[m ³]	0.604	0.604	0.604	0.604

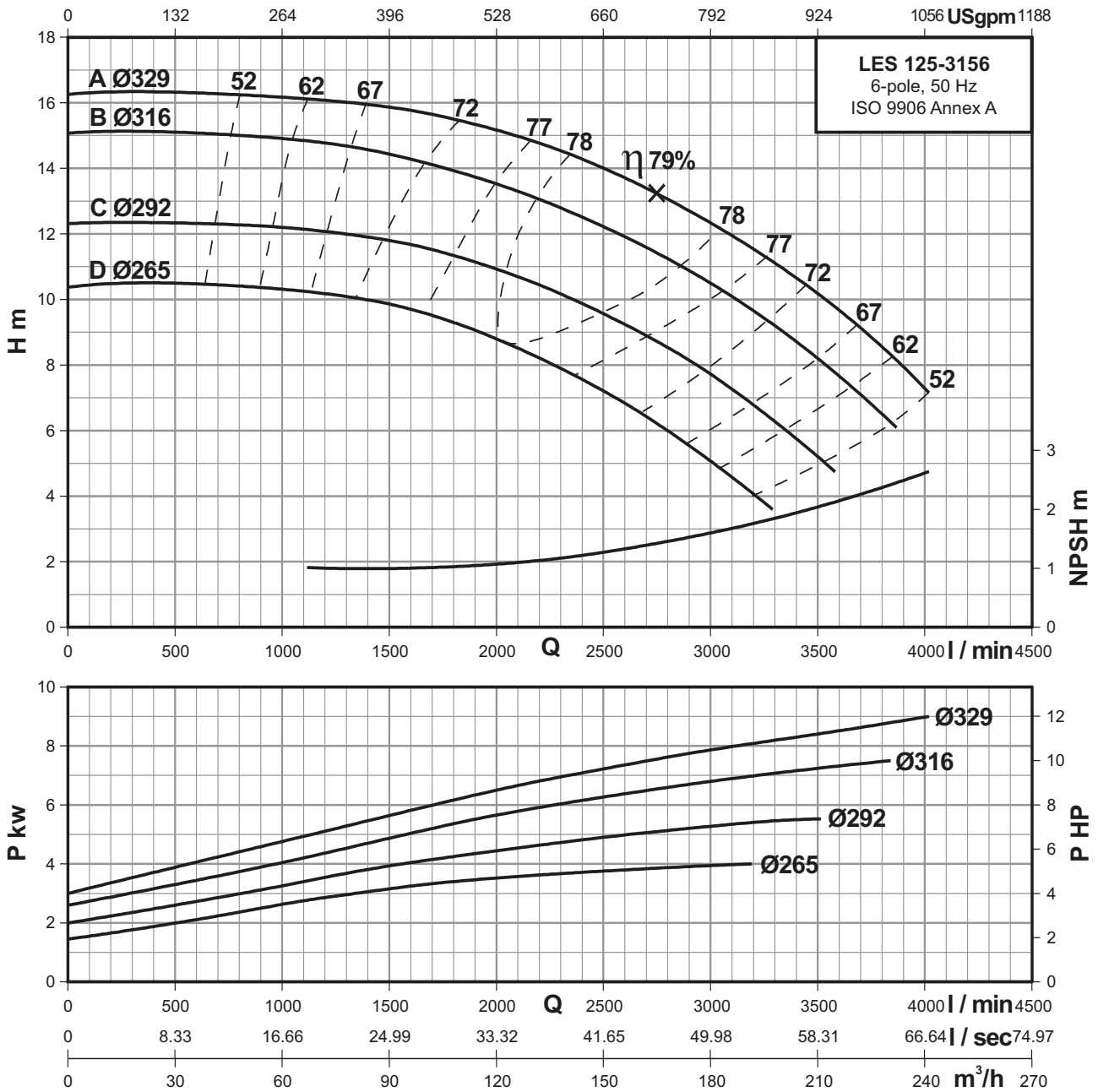
6 POLE

Performance curves

LES 125-3156

Single-stage end-suction pumps

6-pole



Performance Data At n=960 RPM

MODEL	POWER		m³/h	60	72	90	108	120	132	150	168	180	192	210	228	240
	KW	HP		l/min	1000	1200	1500	1800	2000	2200	2500	2800	3000	3200	3500	3800
LES 125-3156D	4.0	5.5	H (m)	10.3	10.1	9.8	9.3	8.8	8.2	7.2	6	5	4	-	-	-
LES 125-3156C	5.5	7.5		12.2	12	11.8	11.3	10.9	10.4	9.6	8.5	7.8	6.8	5.2	-	-
LES 125-3156B	7.5	10.0		14.9	14.7	14.4	13.9	13.5	13	12.2	11.2	10.4	9.6	8.2	6.4	-
LES 125-3156A	9.3	12.5		16.2	16.1	15.9	15.5	15.2	14.7	14	13	12.3	11.5	10.2	8.5	7.3

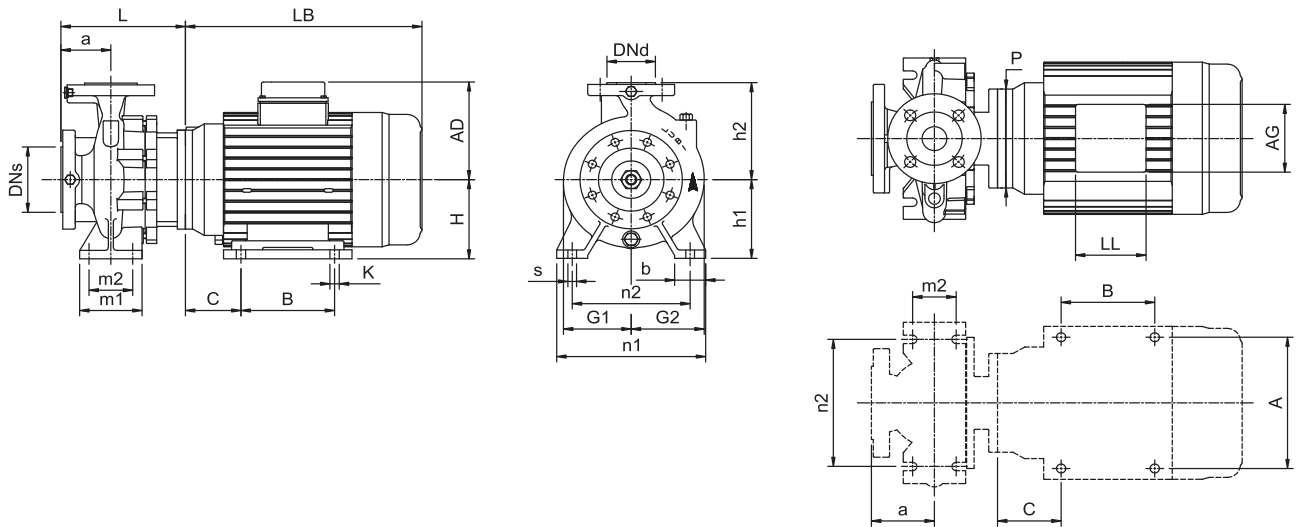
6 POLE

Technical Data

Single-stage end-suction pumps

LES 125-4006

6-pole



Power	[kw]	11	15	18.5	22
	[hp]	15	20	25	30
Frame		160L	180L	200L	200L
PN	[bar]	16	16	16	16
Code for Impeller diameter		D	C	B	A
DNs	[mm]	150	150	150	150
Dnd	[mm]	125	125	125	125
a	[mm]	140	140	140	140
h2	[mm]	400	400	400	400
L	[mm]	287	287	437	437
h1	[mm]	315	315	315	315
G1	[mm]	267	267	267	267
G2	[mm]	299	299	299	299
m1	[mm]	200	200	200	200
m2	[mm]	150	150	150	150
n1	[mm]	500	500	500	500
n2	[mm]	400	400	400	400
b	[mm]	100	100	100	100
s	[mm]	22	22	22	22
H	[mm]	160	180	200	200
LB	[mm]	544	641	688	688
AD	[mm]	222	294	306	306
AG	[mm]	152	263	263	263
LL	[mm]	152	195	195	195
P	[mm]	254	356	400	400
C	[mm]	108	121	133	133
B	[mm]	254	279	308	308
A	[mm]	254	279	318	318
K	[mm]	15	15	19	19
Net Weight	[kg]	226	366	439	451
Gross Weight	[kg]	323	463	549	561
Volume	[m ³]	0.887	0.887	1.088	1.088

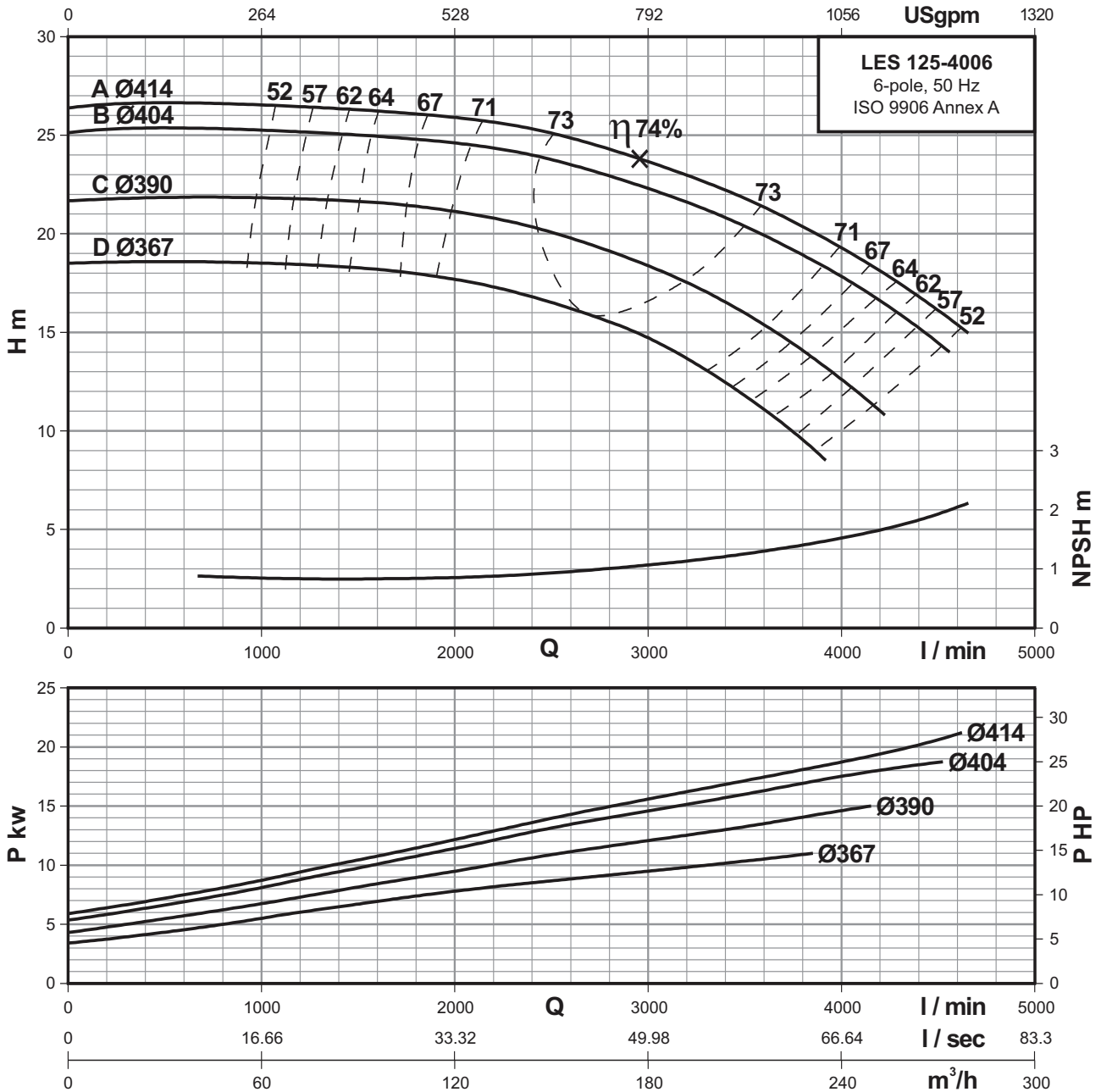
6 POLE

Performance curves

LES 125-4006

Single-stage end-suction pumps

6-pole



Performance Data At n=960 RPM

MODEL	POWER		m³/h	108	120	132	150	168	180	192	210	228	240	252	270	276
	KW	HP		l/min	1800	2000	2200	2500	2800	3000	3200	3500	3800	4000	4200	4500
LES 125-4006D	11.0	15.0	H (m)	18	17.7	17.3	16.5	15.5	14.8	13.8	11.8	9.5	7.8	-	-	-
LES 125-4006C	15.0	20.0		21.4	21.1	20.8	20	19.1	18.4	17.5	16	14	12.6	11	-	-
LES 125-4006B	18.5	25.0		24.8	24.6	24.3	23.7	23	22.3	21.6	20.4	19	17.9	16.5	14.5	-
LES 125-4006A	22.0	30.0		26	25.9	25.7	25.1	24.2	23.6	23	21.8	20.3	19.2	18.1	16	15.3

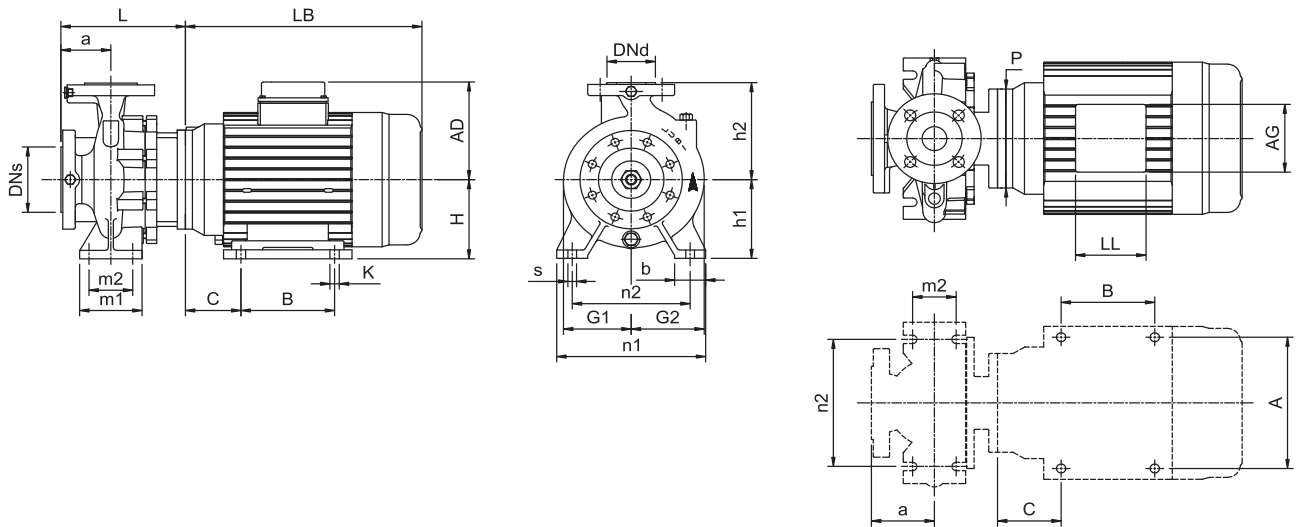
6 POLE

Technical Data

Single-stage end-suction pumps

LES 150-3156

6-pole



Power	[kw]	7.5	9.3	11	15
	[hp]	10	12.5	15	20
Frame		160M	160M	160L	180L
PN	[bar]	16	16	16	16
Code for Impeller diameter		D	C	B	A
DNs	[mm]	200	200	200	200
Dnd	[mm]	150	150	150	150
a	[mm]	160	160	160	160
h2	[mm]	400	400	400	400
L	[mm]	308	308	308	307
h1	[mm]	280	280	280	280
G1	[mm]	242	242	242	242
G2	[mm]	287	287	287	287
m1	[mm]	200	200	200	200
m2	[mm]	150	150	150	150
n1	[mm]	550	550	550	550
n2	[mm]	450	450	450	450
b	[mm]	100	100	100	100
s	[mm]	22	22	22	22
H	[mm]	160	160	160	180
LB	[mm]	500	500	544	641
AD	[mm]	222	222	222	294
AG	[mm]	152	152	152	263
LL	[mm]	152	152	152	195
P	[mm]	254	254	254	356
C	[mm]	108	108	108	121
B	[mm]	210	210	254	279
A	[mm]	254	254	254	279
K	[mm]	15	15	15	15
Net Weight	[kg]	216	222	227	368
Gross Weight	[kg]	299	305	310	464
Volume	[m ³]	0.696	0.696	0.696	0.883

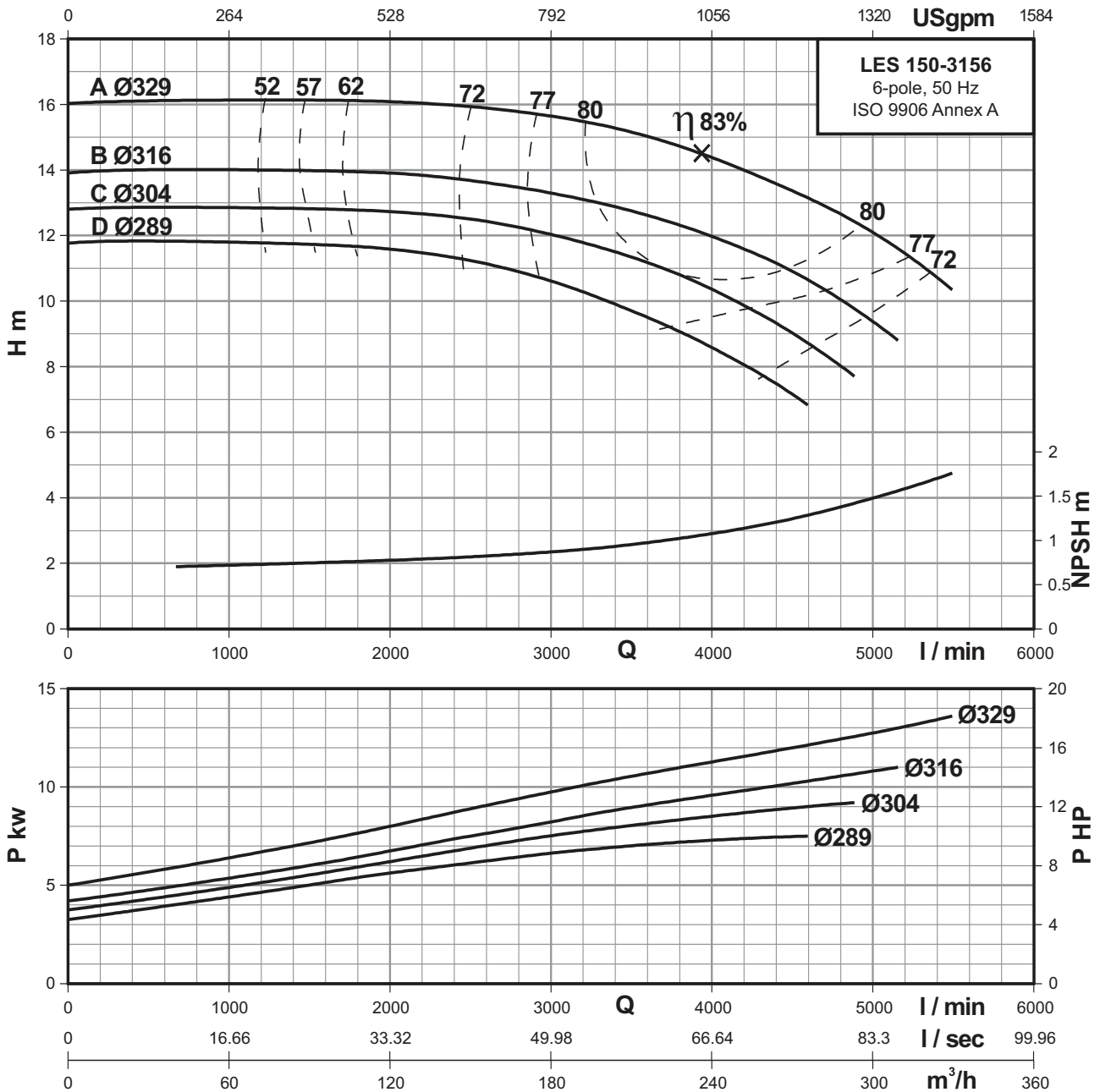
6 POLE

Performance curves

LES 150-3156

Single-stage end-suction pumps

6-pole



Performance Data At n=960 RPM

MODEL	POWER		m ³ /h l/min	90	108	120	132	150	168	180	210	240	270	300	318	330
	KW	HP		1500	1800	2000	2200	2500	2800	3000	3500	4000	4500	5000	5300	5500
LES 150-3156D	7.5	10.0	H (m)	11.8	11.7	11.6	11.5	11.3	10.9	10.6	9.7	8.6	7.2	-	-	-
LES 150-3156C	9.3	12.5		12.9	12.8	12.7	12.6	12.4	12.2	12	11.4	10.3	9	-	-	-
LES 150-3156B	11.0	15.0		14	14	13.9	13.8	13.6	13.5	13.3	12.7	12	10.8	9.4	-	-
LES 150-3156A	15.0	20.0		16.2	16.1	16.1	16	15.9	15.8	15.6	15.3	14.4	13.3	12	11.1	10.4

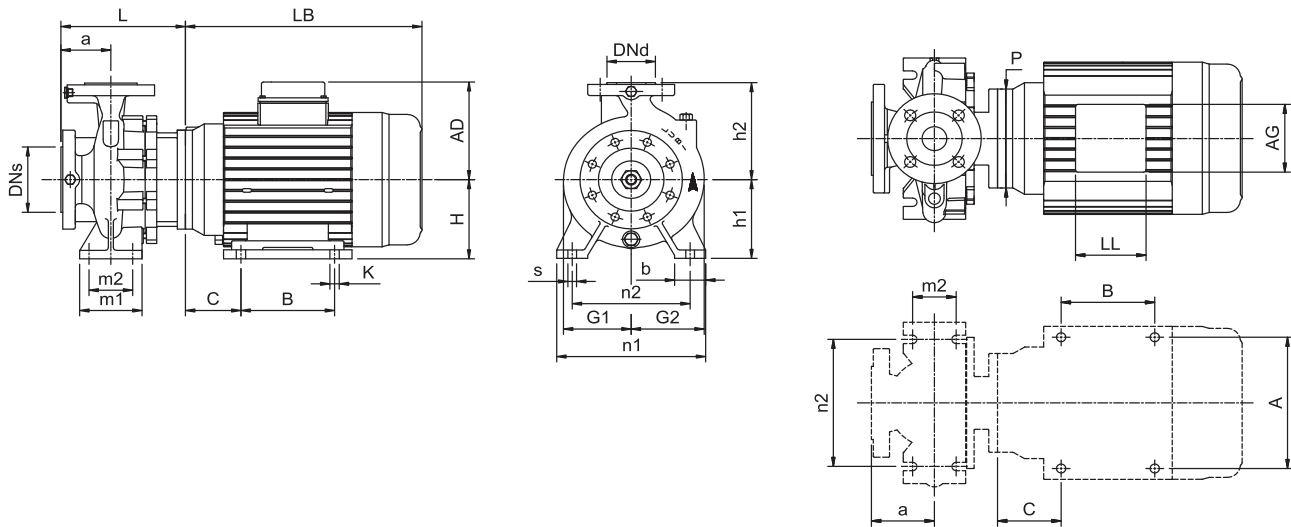
6 POLE

Technical Data

Single-stage end-suction pumps

LES 150-4006

6-pole



Power	[kw]	15	18.5	22	30
	[hp]	20	25	30	40
Frame		180L	200L	200L	225M
PN	[bar]	16	16	16	16
Code for Impeller diameter		D	C	B	A
DN _s	[mm]	200	200	200	200
DN _d	[mm]	150	150	150	150
a	[mm]	160	160	160	160
h ₂	[mm]	450	450	450	450
L	[mm]	307	457	457	457
h ₁	[mm]	315	315	315	315
G ₁	[mm]	279	279	279	279
G ₂	[mm]	320	320	320	320
m ₁	[mm]	200	200	200	200
m ₂	[mm]	150	150	150	150
n ₁	[mm]	550	550	550	550
n ₂	[mm]	450	450	450	450
b	[mm]	100	100	100	100
s	[mm]	22	22	22	22
H	[mm]	180	200	200	225
LB	[mm]	641	688	688	725
AD	[mm]	294	306	306	328
AG	[mm]	263	263	263	263
LL	[mm]	195	195	195	195
P	[mm]	356	400	400	450
C	[mm]	121	133	133	149
B	[mm]	279	308	308	311
A	[mm]	279	318	318	356
K	[mm]	15	19	19	19
Net Weight	[kg]	389	462	473	553
Gross Weight	[kg]	499	572	583	663
Volume	[m ³]	1.088	1.088	1.088	1.088

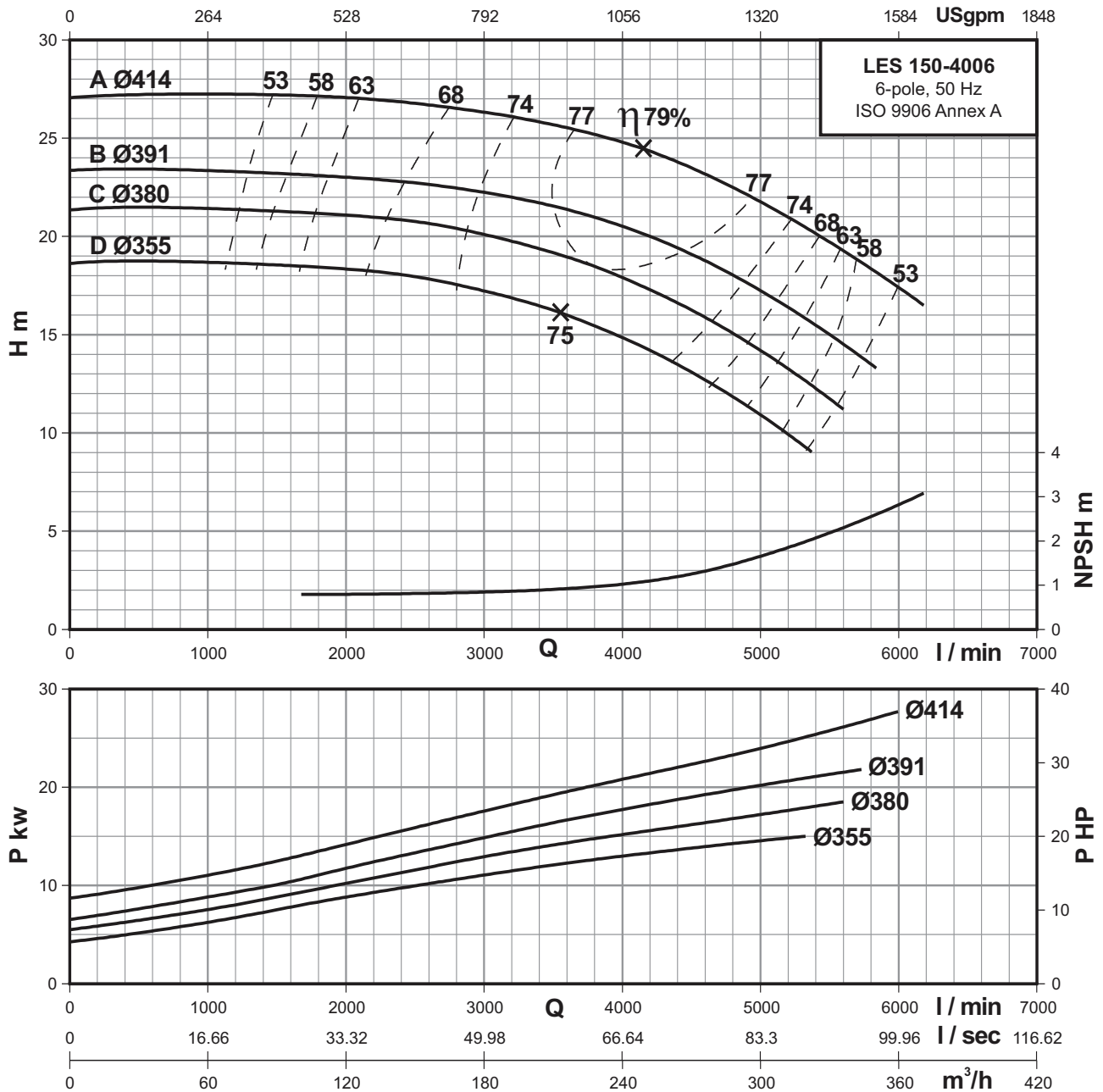
6 POLE

Performance curves

LES 150-4006

Single-stage end-suction pumps

6-pole



Performance Data At n=960 RPM

MODEL	POWER		m ³ /h	108	120	132	150	168	180	210	240	270	300	330	360	372
	KW	HP		l/min	1800	2000	2200	2500	2800	3000	3500	4000	4500	5000	5500	6000
LES 150-4006D	15.0	20.0	H (m)	18.4	18.3	18.2	18	17.5	17.2	16.2	14.9	13	11	-	-	-
LES 150-4006C	18.5	25.0		21.1	21	20.9	20.8	20.6	20	19.2	18	16.3	14.1	11.8	-	-
LES 150-4006B	22.0	30.0		23.1	23	22.9	22.8	22.4	22.2	21.5	20.5	19.1	17.2	15	-	-
LES 150-4006A	30.0	40.0		27.1	27	27	26.8	26.5	26.3	25.7	24.8	23.5	21.8	19.8	17.4	16.5

6 POLE

Accessories

Single-stage end-suction pumps

LES

Counter flanges

Cast iron pumps (version-A,B,C,D)

For threaded connection, flanges are made of cast iron.
For welding connection, flanges are made of carbon steel.

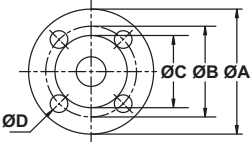
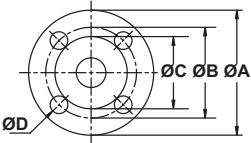
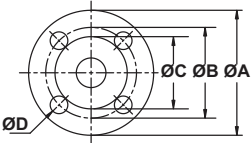
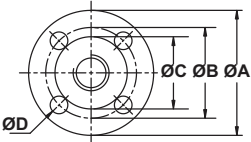
CF-8 & Bronze pumps (version-E,F)

For threaded connection, flanges are made of CF-8.
For welding connection, flanges are made of S.S.304.

CF-8M pumps (version-G)

For threaded connection, flanges are made of CF-8M.
For welding connection, flanges are made of S.S.316.

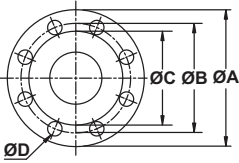
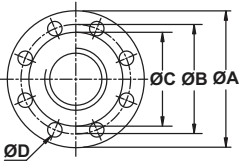
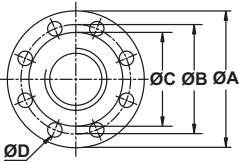
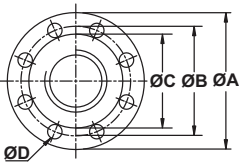
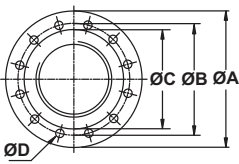
A set of consist on one counter flange, one gasket of rubber material and the requisite number of bolts and nuts.

Counter flange	Flange size	Description		A	B	C	ØDxQty. of Holes	Pipework connection	Product number
	DN 32	Threaded	PN 16	Ø140	Ø100	Ø78	Ø18X4	Rp 1¼ BSP**	0321T*
			PN 25	Ø140	Ø100	Ø78	Ø18X4		0322T*
			ANSI 125	Ø115	Ø89	-	Ø5/8"X4	Rp 1¼ NPT	0323T*
			ANSI 250	Ø135	Ø98	Ø78	Ø3/4"X4		0324T*
		For welding	PN 16	Ø140	Ø100	Ø78	Ø18X4	32 mm	0321W*
			PN 25	Ø140	Ø100	Ø78	Ø18X4		0322W*
			ANSI 125	Ø115	Ø89	-	Ø5/8"X4		0323W*
			ANSI 250	Ø135	Ø98	Ø78	Ø3/4"X4		0324W*
	DN 40	Threaded	PN 16	Ø150	Ø110	Ø88	Ø18X4	Rp 1½ BSP**	0401T*
			PN 25	Ø150	Ø110	Ø88	Ø18X4		0402T*
			ANSI 125	Ø125	Ø98	-	Ø5/8"X4	Rp 1½ NPT	0403T*
			ANSI 250	Ø155	Ø114	Ø91	Ø7/8"X4		0404T*
		For welding	PN 16	Ø150	Ø110	Ø88	Ø18X4	40 mm	0401W*
			PN 25	Ø150	Ø110	Ø88	Ø18X4		0402W*
			ANSI 125	Ø125	Ø98	-	Ø5/8"X4		0403W*
			ANSI 250	Ø155	Ø114	Ø91	Ø7/8"X4		0404W*
	DN 50	Threaded	PN 16	Ø165	Ø125	Ø102	Ø18X4	Rp 2 BSP**	0501T*
			PN 25	Ø165	Ø125	Ø102	Ø18X4		0502T*
			ANSI 125	Ø150	Ø121	-	Ø3/4"X4	Rp 2 NPT	0503T*
			ANSI 250	Ø165	Ø127	Ø106	Ø3/4"X8		0504T*
		For welding	PN 16	Ø165	Ø125	Ø102	Ø18X4	50 mm	0501W*
			PN 25	Ø165	Ø125	Ø102	Ø18X4		0502W*
			ANSI 125	Ø150	Ø121	-	Ø3/4"X4		0503W*
			ANSI 250	Ø165	Ø127	Ø106	Ø3/4"X8		0504W*
	DN 65	Threaded	PN 16	Ø185	Ø145	Ø122	Ø18X4	Rp 2½ BSP**	0651T*
			PN 25	Ø185	Ø145	Ø122	Ø18X8		0652T*
			ANSI 125	Ø180	Ø140	-	Ø3/4"X4	Rp 2½ NPT	0653T*
			ANSI 250	Ø190	Ø149	Ø125	Ø7/8"X8		0654T*
		For welding	PN 16	Ø185	Ø145	Ø122	Ø18X4	65 mm	0651W*
			PN 25	Ø185	Ø145	Ø122	Ø18X8		0652W*
			ANSI 125	Ø180	Ø140	-	Ø3/4"X4		0653W*
			ANSI 250	Ø190	Ø149	Ø125	Ø7/8"X8		0654W*

Accessories

Single-stage end-suction pumps

LES

Counter flange	Flange size	Description		A	B	C	ØDxQty. of Holes	Pipework connection	Product number
	DN 80	Threaded	PN 16	Ø200	Ø160	Ø138	Ø18X8	Rp 3 BSP**	0801T*
			PN 25	Ø200	Ø160	Ø138	Ø18X8		0802T*
			ANSI 125	Ø190	Ø152	-	Ø3/4"X4	Rp 3 NPT	0803T*
			ANSI 250	Ø210	Ø168	Ø144	Ø7/8"X8		0804T*
		For welding	PN 16	Ø200	Ø160	Ø138	Ø18X8	80 mm	0801W*
			PN 25	Ø200	Ø160	Ø138	Ø18X8		0802W*
			ANSI 125	Ø190	Ø152	-	Ø3/4"X4		0803W*
			ANSI 250	Ø210	Ø168	Ø144	Ø7/8"X8		0804W*
	DN 100	Threaded	PN 16	Ø235	Ø180	Ø158	Ø18X8	Rp 4 BSP**	1001T*
			PN 25	Ø235	Ø190	Ø158	Ø22X8		1002T*
			ANSI 125	Ø230	Ø191	-	Ø3/4"X8	Rp 4 NPT	1003T*
			ANSI 250	Ø255	Ø200	Ø176	Ø7/8"X8		1004T*
		For welding	PN 16	Ø235	Ø180	Ø158	Ø18X8	100 mm	1001W*
			PN 25	Ø235	Ø190	Ø158	Ø22X8		1002W*
			ANSI 125	Ø230	Ø191	-	Ø3/4"X8		1003W*
			ANSI 250	Ø255	Ø200	Ø176	Ø7/8"X8		1004W*
	DN 125	Threaded	PN 16	Ø270	Ø210	Ø188	Ø18X8	Rp 5 BSP**	1251T*
			PN 25	Ø270	Ø220	Ø188	Ø25X8		1252T*
			ANSI 125	Ø255	Ø216	-	Ø7/8"X8	Rp 5 NPT	1253T*
			ANSI 250	Ø280	Ø235	Ø211	Ø7/8"X8		1254T*
		For welding	PN 16	Ø270	Ø210	Ø188	Ø18X8	125 mm	1251W*
			PN 25	Ø270	Ø220	Ø188	Ø25X8		1252W*
			ANSI 125	Ø255	Ø216	-	Ø7/8"X8		1253W*
			ANSI 250	Ø280	Ø235	Ø211	Ø7/8"X8		1254W*
	DN 150	Threaded	PN 16	Ø300	Ø240	Ø212	Ø22X8	Rp 6 BSP**	1501T*
			PN 25	Ø300	Ø250	Ø212	Ø25X8		1502T*
			ANSI 125	Ø280	Ø241	-	Ø7/8"X8	Rp 6 NPT	1503T*
			ANSI 250	Ø320	Ø270	Ø246	Ø7/8"X12		1504T*
		For welding	PN 16	Ø300	Ø240	Ø212	Ø22X8	150 mm	1501W*
			PN 25	Ø300	Ø250	Ø212	Ø25X8		1502W*
			ANSI 125	Ø280	Ø241	-	Ø7/8"X8		1503W*
			ANSI 250	Ø320	Ø270	Ø246	Ø7/8"X12		1504W*
	DN 200	Threaded	PN 16	Ø360	Ø295	Ø268	Ø22X12	Rp 8 BSP**	2001T*
			PN 25	Ø360	Ø310	Ø268	Ø25X12		2002T*
			ANSI 125	Ø345	Ø299	-	Ø7/8"X8	Rp 8 NPT	2003T*
			ANSI 250	Ø380	Ø330	Ø303	Ø1-1/8"X12		2004T*
		For welding	PN 16	Ø360	Ø295	Ø268	Ø22X12	200 mm	2001W*
			PN 25	Ø360	Ø310	Ø268	Ø25X12		2002W*
			ANSI 125	Ø345	Ø299	-	Ø7/8"X8		2003W*
			ANSI 250	Ø380	Ø330	Ø303	Ø1-1/8"X12		2004W*

* Add a subscript as per following example to part number.

0321TCI for cast iron flanges.

0321TS1 for S.S 304 flanges.

0321TS2 for S.S 316 flanges.

0321WCS for carbon steel flanges.

** NPT threaded flanges are also available on request.